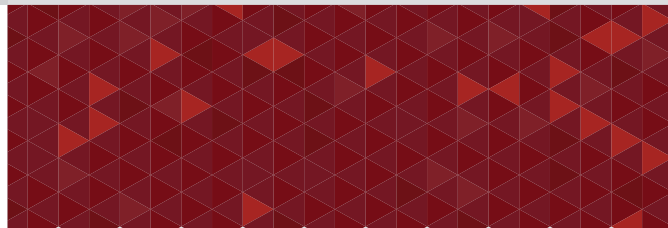




WWW.KETROWA.COM

ABOUT KETROWA

Providing materials and equipment for construction projects is always one of the most important concerns of builders and project managers. The importance of this issue stems from its direct impact on the project schedule, construction cost, and final building value. With the aim of facilitating the process of providing construction goods and taking into account its social responsibility, Ketrowa team has created a comprehensive and online system. In this system, builders will be able to prepare the schedule for the supply of materials and equipment for their construction projects and order the supply of goods based on the plan. These orders are made by comparing various products available in the system. Mass builders are the most important target customers of Ketrowa, and Ketrowa tries to supply and deliver goods on time to the consumer by logical planning for manufacturers and by providing cash and credit purchase model. Also, due to the reception and request for the supply of construction products for foreign markets, the supply of construction products for export markets is another main goal of Ketrowa. Ketrowa plans to transform the traditional and opaque market into a modern, high-speed and accurate market where buyers can get the quality goods they want at the most appropriate price.



MECHANICAL, HEATING
& COOLING FACILITIES

ELECTRICAL
FACILITIES

SANITARY

STRUCTURE

JOINERY &
FINISHING

Products are produced and
supplied in five branches:
Structure, Electrical
Facilities, Mechanical, Heating &
Cooling Facilities, Sanitary, Joinery &
Finishing., combining art and industry.

3

2

1

4

5

UPVC Door & Window

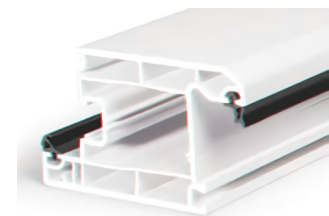




- *White UPVC Profile with Rubber Gasket
- *Double Sided Laminate
- *Outside the Laminate

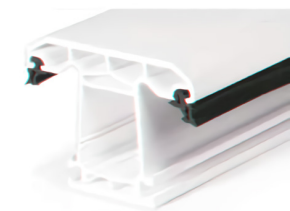
Opening Inside Door Profile (60 mm)

Package Size (m)	Package Type (Number of Branches)	Weight (g)	Thickness of the Walls (mm)	Profile Dimensions (mm)	Profile Width (mm)	Height of the Inner Wall (mm)	External Wall Height (mm)
24	4	1442 Grams per Metre	1.8	32x32x32	60	95	95



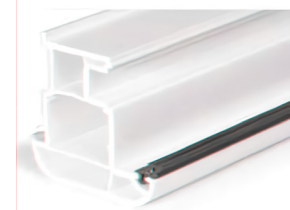
Fixed Middle Frame Profile (60 mm)

Package Size (m)	Package Type (Number of Branches)	Weight (g)	Thickness of the Walls (mm)	Profile Dimensions (mm)	Profile Width (mm)	Height of the Inner Wall (mm)	External Wall Height (mm)
36	6	1005 Grams per Metre	1.8	32x32x32	60	44	84



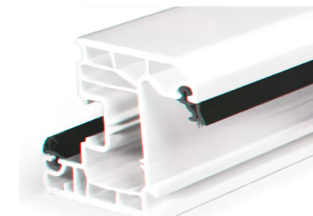
Moving Middle Frame Profile (60 mm)

Package Size (m)	Package Type (Number of Branches)	Weight (g)	Thickness of the Walls (mm)	Profile Dimensions (mm)	Profile Width (mm)	Height of the Inner Wall (mm)	External Wall Height (mm)
36	6	912 Grams per Metre	2.5	32x32x32	60	38	65



Window Mate Frame Profile (60 mm)

Package Size (m)	Package Type (Number of Branches)	Weight (g)	Thickness of the Walls (mm)	Profile Dimensions (mm)	Profile Width (mm)	Height of the Inner Wall (mm)	External Wall Height (mm)
36	6	1260 Grams per Metre	1.8	32x32x32	60	61	81



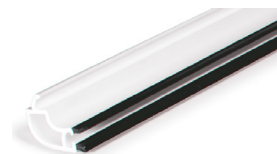
*White UPVC Profile with Rubber Gasket

*Double Sided Laminate

*Outside the Laminate

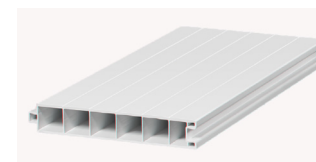
Double-glazed Glass Groove (60 mm)

Package Size (m)	Package Type (Number of Branches)	Weight (g) Grams per Metre	Thickness of the Walls (mm)
150	25	230	2



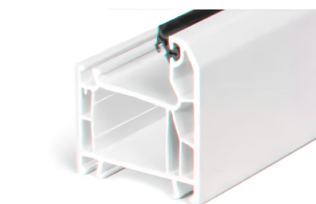
Panel

Package Size (m)	Package Type (Number of Branches)	Weight (g) Grams per Metre	Thickness of the Walls (mm)	Profile Thickness (mm)	Profile Dimensions (mm)
84	14	560	1	20	100x20



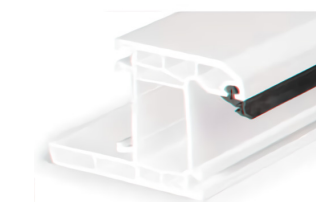
Super Frame Profile (60 mm)

Package Size (m)	Package Type (Number of Branches)	Weight (g) Grams per Metre	Thickness of the Walls (mm)	Profile Dimensions (mm)	Profile Width (mm)	Height of the Inner Wall (mm)	External Wall Height (mm)
36	6	1000	1.6	27x27x27	60	47	67



Reconstruction Frame Profile (60 mm)

Package Size (m)	Package Type (Number of Branches)	Weight (g) Grams per Metre	Thickness of the Walls (mm)	Profile Dimensions (mm)	Profile Width (mm)	Height of the Inner Wall (mm)	External Wall Height (mm)
36	6	1075	1.8	27x27x27	60	53	87.5





Code: K04011



Code: K04013



Code: K04015



Code: K04012



Code: K04014



Code: K04016



Code: K04017



Code: K04019



Code: K04021



Code: K04018



Code: K04020



Code: K04022



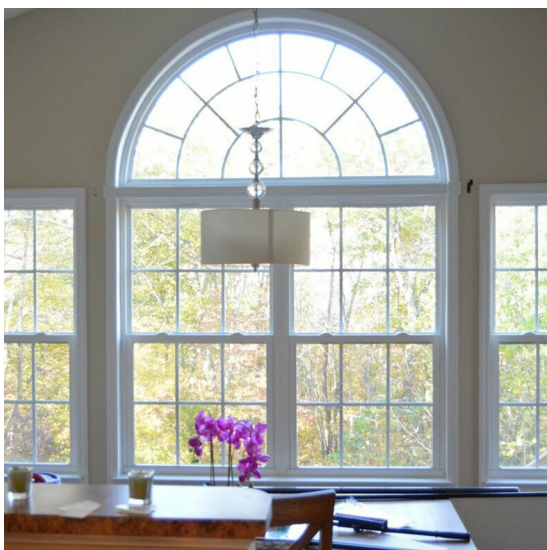
Code: K04023



Code: K04025



Code: K04027



Code: K04024



Code: K04026



Code: K04028



Code: K04029



Code: K04031



Code: K04030



Code: K04032



Ketrowa UPVC Profile

Technical Specifications

Sealing Tape (Gasket)	Profile Class	Impact Resistance	Air Permeability
EPDM	B	EN12608	DIN EN 12207 -Class4



CERTIFICATE

THE MANAGEMENT SYSTEM OF
TOSEE VA TAMIN BANA GOSTAR ASIA SAZEH CO. (KETROWA)

NO.477, BETWEEN 1ST AND 2ND VAHD ST., SHAHID BEHESHTI BLVD., BAGHESTAN HWY., SHAHRAR, TEHRAN PROVINCE, IRAN

has been assessed and certified as meeting the requirements of
ISO 14001:2015

Environmental management system

FOR THE FOLLOWING ACTIVITIES

Comprehensive Supplier of Building Materials

CERTIFICATE REGISTRATION NO.: QM5933306
ORIGINAL CERTIFICATION DATE: MAY 07, 2025
CURRENT CERTIFICATION DATE: MAY 07, 2025
CERTIFICATE EXPIRY DATE: MAY 07, 2028
THIS CERTIFICATE REMAINS VALID SUBJECT TO SATISFACTORY SURVEILLANCE AUDITS.


Authorized Signatory
EIQM Ltd. Certification Services
info@eiqmcert.com



EIQM Ltd. Certification Services is a certification body for assessment of objective evidence and issuance of certificate. this certificate is issued on the basis of the independent authority of the EIQM certification services. we partner with you to offer independent services that will help you, streamline your processes and operate in a more sustainable manner.
The validity of this certificate can be verified at www.eiqmcert.com



CERTIFICATE

THE MANAGEMENT SYSTEM OF
TOSEE VA TAMIN BANA GOSTAR ASIA SAZEH CO. (KETROWA)

NO.477, BETWEEN 1ST AND 2ND VAHD ST., SHAHID BEHESHTI BLVD., BAGHESTAN HWY., SHAHRAR, TEHRAN PROVINCE, IRAN

has been assessed and certified as meeting the requirements of
ISO 45001:2018

Occupational health and safety management system

FOR THE FOLLOWING ACTIVITIES

Comprehensive Supplier of Building Materials

CERTIFICATE REGISTRATION NO.: QM5933307
ORIGINAL CERTIFICATION DATE: MAY 07, 2025
CURRENT CERTIFICATION DATE: MAY 07, 2025
CERTIFICATE EXPIRY DATE: MAY 07, 2028
THIS CERTIFICATE REMAINS VALID SUBJECT TO SATISFACTORY SURVEILLANCE AUDITS.


Authorized Signatory
EIQM Ltd. Certification Services
info@eiqmcert.com



EIQM Ltd. Certification Services is a certification body for assessment of objective evidence and issuance of certificate. this certificate is issued on the basis of the independent authority of the EIQM certification services. we partner with you to offer independent services that will help you, streamline your processes and operate in a more sustainable manner.
The validity of this certificate can be verified at www.eiqmcert.com



CERTIFICATE

THE MANAGEMENT SYSTEM OF
TOSEE VA TAMIN BANA GOSTAR ASIA SAZEH CO. (KETROWA)

NO.477, BETWEEN 1ST AND 2ND VAHD ST., SHAHID BEHESHTI BLVD., BAGHESTAN HWY., SHAHRAR, TEHRAN PROVINCE, IRAN

has been assessed and certified as meeting the requirements of
ISO 9001:2015

Quality management system

FOR THE FOLLOWING ACTIVITIES

Comprehensive Supplier of Building Materials

CERTIFICATE REGISTRATION NO.: QM5933305
ORIGINAL CERTIFICATION DATE: MAY 07, 2025
CURRENT CERTIFICATION DATE: MAY 07, 2025
CERTIFICATE EXPIRY DATE: MAY 07, 2028
THIS CERTIFICATE REMAINS VALID SUBJECT TO SATISFACTORY SURVEILLANCE AUDITS.


Authorized Signatory
EIQM Ltd. Certification Services
info@eiqmcert.com



EIQM Ltd. Certification Services is a certification body for assessment of objective evidence and issuance of certificate. this certificate is issued on the basis of the independent authority of the EIQM certification services. we partner with you to offer independent services that will help you, streamline your processes and operate in a more sustainable manner.
The validity of this certificate can be verified at www.eiqmcert.com



CERTIFICATE

THE MANAGEMENT SYSTEM OF
TOSEE VA TAMIN BANA GOSTAR ASIA SAZEH CO. (KETROWA)

NO.477, BETWEEN 1ST AND 2ND VAHD ST., SHAHID BEHESHTI BLVD., BAGHESTAN HWY., SHAHRAR, TEHRAN PROVINCE, IRAN

has been assessed and certified as meeting the requirements of
IMS

ISO 9001:2015 , ISO 14001:2015 , ISO 45001:2018

FOR THE FOLLOWING ACTIVITIES

Comprehensive Supplier of Building Materials

CERTIFICATE REGISTRATION NO.: QM5933308
ORIGINAL CERTIFICATION DATE: MAY 07, 2025
CURRENT CERTIFICATION DATE: MAY 07, 2025
CERTIFICATE EXPIRY DATE: MAY 07, 2028
THIS CERTIFICATE REMAINS VALID SUBJECT TO SATISFACTORY SURVEILLANCE AUDITS.


Authorized Signatory
EIQM Ltd. Certification Services
info@eiqmcert.com



EIQM Ltd. Certification Services is a certification body for assessment of objective evidence and issuance of certificate. this certificate is issued on the basis of the independent authority of the EIQM certification services. we partner with you to offer independent services that will help you, streamline your processes and operate in a more sustainable manner.
The validity of this certificate can be verified at www.eiqmcert.com





info@ketrowa.com

www.ketrowa.com