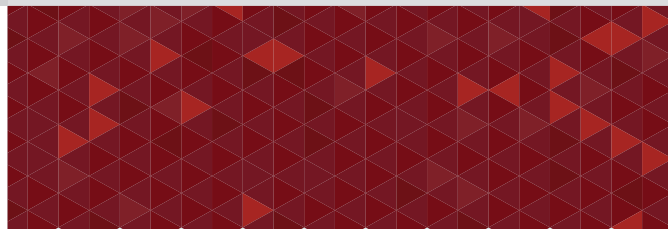


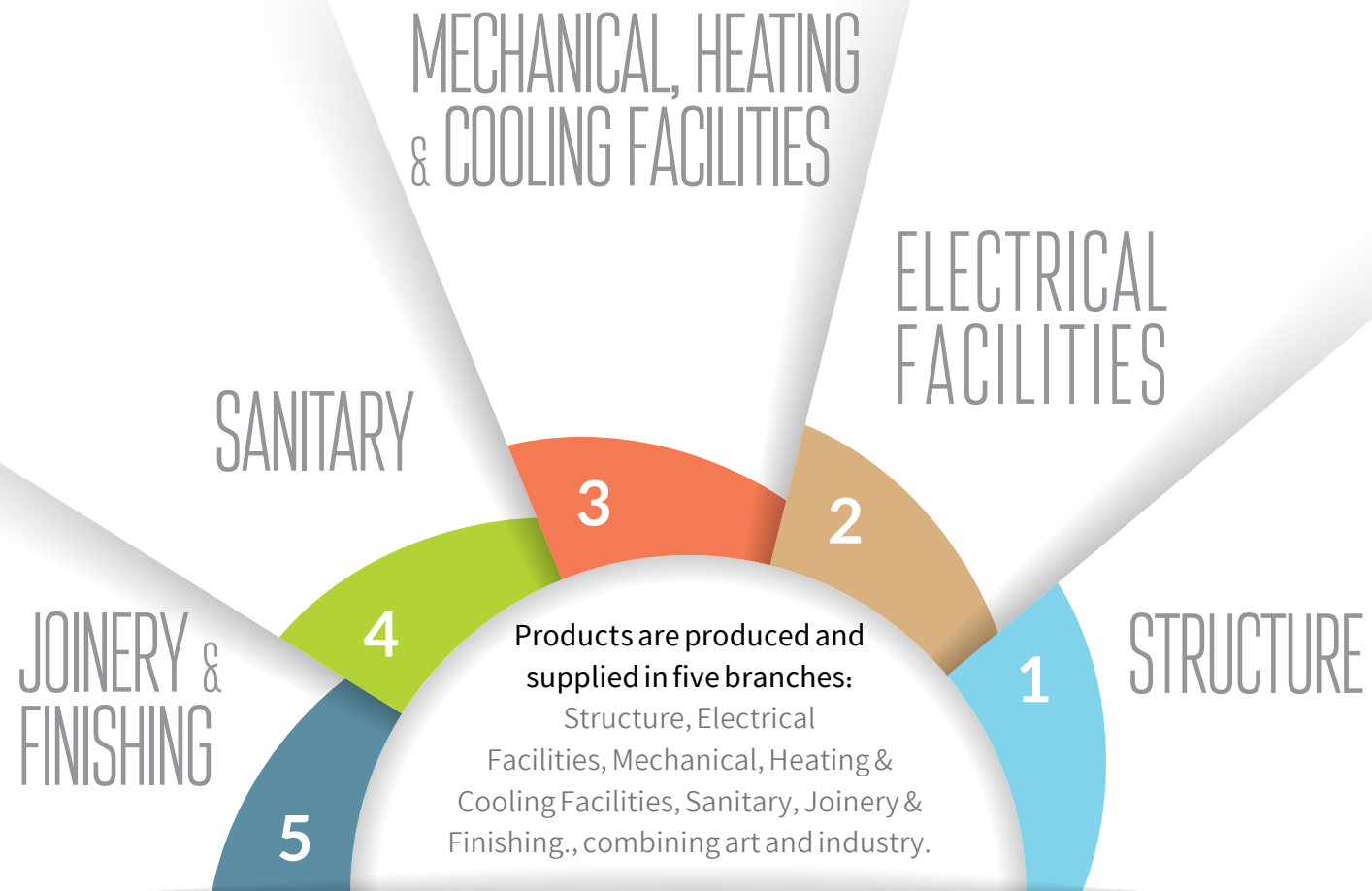


WWW.KETROWA.COM

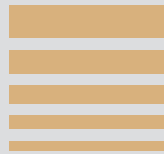
## ABOUT KETROWA

Providing materials and equipment for construction projects is always one of the most important concerns of builders and project managers. The importance of this issue stems from its direct impact on the project schedule, construction cost, and final building value. With the aim of facilitating the process of providing construction goods and taking into account its social responsibility, Ketrowa team has created a comprehensive and online system. In this system, builders will be able to prepare the schedule for the supply of materials and equipment for their construction projects and order the supply of goods based on the plan. These orders are made by comparing various products available in the system. Mass builders are the most important target customers of Ketrowa, and Ketrowa tries to supply and deliver goods on time to the consumer by logical planning for manufacturers and by providing cash and credit purchase model. Also, due to the reception and request for the supply of construction products for foreign markets, the supply of construction products for export markets is another main goal of Ketrowa. Ketrowa plans to transform the traditional and opaque market into a modern, high-speed and accurate market where buyers can get the quality goods they want at the most appropriate price.





**SMART BUILDING**

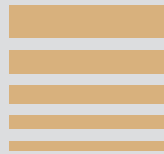


**SMART HOME**  
**TOUCH PANEL**  
**VIDEO DOORBELL**  
**SMART HANDLE**





**SMART HOME**





## Fiber Optic Equipment

Optical Fiber Network Equipment Includes Types of Optical Fiber, Patch Cord and Optical Fiber Pigtail and Other Peripheral Equipment in Types of Loose Tube, Tight Buffer, etc., in Various Sizes and Capacities, Which Are Selected and Installed According to the Technical Needs of the Project.



## Amplifier and Application

**Networking:** Standards compliance

**Supported Topologies:** Star **Number of Input Channels:** 4-4-4-8-2

**Remote Interface:** ArmoniaPlus™

**Analog:** 4-4-4-8-2

**Channel Handling:** 4Hi-4Hi-4Hi-8mono-2

**Number of Output Channels:** 4Lo-4Lo-4Lo-2Hi-2Lo



## RTU

**Connections: Inputs:** MODBUS on the Platform RS485, 4-20 Milliampere, 0 to 5 Volts, Single-bit Digital Input, 2-bit Digital Input

**Outputs:** LCD or SEVEN SEGMENT Display, MODBUS on the Platform RS485, 4-20 Milliampere, 0 to 5 Volts, Single-bit Digital Input, 2-bit Digital Input

**Technical Specifications:** Ability to Save Log, Ability to Display Information on the Web, Modularity and Ability to Change Inputs and Outputs, Has GSM-GPRS Data Transmission System.



## Wall Speaker (Built-in)

**Suggested Power:** 10-150W

**Resonant Frequency:** 65Hz

**Nominal Impedance:** 8Ω

**Frequency Range:** 50-20KHz

**Sensitivity:** 87dB | 89dB | 90dB



## Wall Speaker (Facing) 30,40,50 W

Maximum SPL	Max Power	Dimension(mm)	Weight(kg)	Frequency Range	Input Impedance	Input Voltage	Rated Power	Speaker Drivers	Sensitivity
102dB	60W	φ138×196	1.4	95Hz-20KHz	4Ω	70V/100V	30W	1×"1,1×"4	87dB
105dB	80W	φ169×211	2.8	85Hz-20KHz	4Ω	70V/100V	40W	1×"2,1×"5.25	89dB
107dB	100W	φ206×292	3.5	75Hz-20KHz	4Ω	70V/100V	50W	1×"2, 1×"6.5	90dB



## Ceiling Speaker 35,50,60 W

Max Power	Dimension(mm)	Weight(kg)	Frequency Range	Nominal Impedance	Frequency Range	Rated Power	Sensitivity	Speaker Drivers
70W	φ239*161.5	2	90Hz	8Ω	70Hz-20KHz	35W	88dB	1×"1,1×"6.5
100W	φ225	4.2	90Hz	4Ω	65Hz-20KHz	50W	106dB	1×"1,1×"6.5
120W	φ281*192.5	2.9	100Hz	8Ω	60Hz-20KHz	60W	87dB	1×"2, 1×"8



## Energy Measurement

**Usage:** Ultrasonic Measurement of the Flow of Various Fluids, Temperature Measurement, Separation of Consumption of Residential and Industrial Units, Energy Separation of Residential and Industrial Units, The Possibility of Connecting and Disconnecting the Electric Valve Connected to It.

**Measurement Accuracy:** 2 Liters per Hour / 6 Liters per Hour

**Accuracy of Temperature Measurement:** 0.1 °C

**Display:** It has a Display with the Ability to Display 2 Languages

**IP:** 68

**Connections:** MODBUS RS485



## Current Measurement (magnetic)

**Technical Specifications:** Absence of Obstacles in the Path of Liquid Flow, No Moving Parts, Ability to Measure Very Low Flow Rates, With the Ability to Adjust the Use of LCD with a Display

**Measurement Accuracy:** <1%

**IP:** IP68 for Sensor, For Pipes from 2 to 24 Inches ( < DN50 ), IP67 for Display



## Mini Amplifier

**Resolution:** 600\*1024 \_ 240\*320

**Material:** IPS

**Expand TF Card Memory:** 32GB

**USB:** Support

**Output Impedance:** 4-8Ω

**Output Power:** 2×10-25-30-60W(Digital Amplifier) - 8×25W(Digital Amplifier)

**Frequency Response:** 20Hz-20KHz

**Photo:** JPGE/BMP/GIF/PNG etc

**Audio S/N ratio:** 98db

**Speaker:** Constant resistance speaker

**Bluetooth:** Version 4.0

**RAM:** 2GB

**ROM:** 16GB

**Audio Input:** AUX/one set

**Feature:** Support Google Play/You Tube App | WIFI/ USB/TF/ Fm Radio/ Bluetooth

**Audio Format:** MP3/WAV/WIMA/FLAC/APE/DTS/ACC/AC3

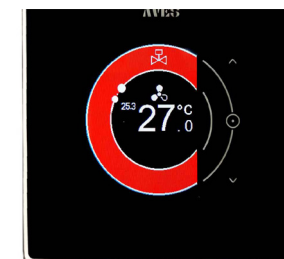
**Video Format:** MPEG-1/2/3/4/RM/RMVB/WMV/MOV | MIK/VOB/AVI/3GP/H/264 etc

**Audio Input:** AUX/one set



## Thermostat (AVES)

**Technical Specifications:** Equipped with a Touch Screen, Zigbee Protocol Support, Ability to Control Three Turns of the Fan Coil, The Ability to Run Different Scenarios, Ability to Control Through the Application, Ability to Control Hot and Cold Valve (2Pipe, 4Pipe), Functionality in Three Modes (Eco, Away, Turbo, Sleep), The ability to Save the Last State After Turning Off the Device, Ability to Operate Independently (In Case of Zigbee Network Disconnection), Display the Actual and Required Temperature, Fan Speed, System Status on the Screen.



## Sivacon Fixed Standing Boards

**Usage:** It Has a Galvanized Body, Has an Economical Price and a Very Short Delivery Time, the Possibility of Making Single and Double Doors, the Possibility of Connecting the Cells to Each Other, Low Weight, Very Easy and Fast Maintenance.

**Installation Method:** Built-in, Facing, Standing, Bridge Mounted

**Body Material:** Galvanized, Stainless Steel, Painted Steel (Electrostatic) and Polymer

**Sheet Thickness (mm):** From 0.5 to 4 mm

**IP:** 42-65



## Rittal Standing Boards

**Usage:** The Possibility of Increasing or Decreasing Cells in the Development Plan, Very High Physical Strength

**Installation Method:** Built-in, Facing, Standing, Bridge Mounted

**Body Material:** Galvanized, Stainless Steel, Painted Steel (Electrostatic) and Polymer

**Sheet Thickness (mm):** From 0.5 to 4 mm

**IP:** 42-65



## Wall Panels

**Usage:** The Possibility of Optimal Use of Minimal Spaces in Residential Units, Industrial, Residential, Commercial and Office Systems, Built-in and Facing

**Installation Method:** Built-in, Facing, Standing, Bridge Mounted

**Body Material:** Galvanized, Stainless Steel, Painted Steel (Electrostatic) and Polymer

**Sheet Thickness (mm):** From 0.5 to 4 mm

**IP:** 42-65

**Colour:** Dark Gray / Light Gray



## Outdoor Boards

**Usage:** Special Waterproof Fittings, Degree of Protection 54 and 65, For Use in Open Spaces, Humid Environments, Polluted and Exposed to Dust.

**Installation Method:** Built-in, Facing, Standing, Bridge Mounted

**Body Material:** Galvanized, Stainless Steel, Painted Steel (Electrostatic) and Polymer

**Sheet Thickness (mm):** From 0.5 to 4 mm

**IP:** 42-65

**Colour:** Dark Gray / Light Gray





## Rack

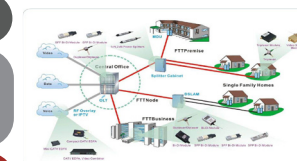
**Wall Rack:** It Has Heights of 4, 6, 7 and 9 Units

**Standing Upright:** It Has 1 fan, 4 Wheels, 4 Fixed Bases and a Set of Bolts and Nuts - Has an Entrance For All Kinds of Cables - the Height of the Racks is 16, 21, 28, 36, 40 or 44 Units - the Depths Are 60, 80 and 100 cm and Above - With Glass Doors or Frame - the Possibility of Installing 1 to 4 Fans Inside the Racks



## Fiber to the Home (FTTH)

**Technical Specifications:** In the Home Fiber Structure, Optical Fiber Is Stretched From the Local Telephone Exchange (OLT) to the Shared Equipment (ONT). Very High Bandwidth. Long Service Life. Due to the Use of Optical Fiber and Passive Elements in the Network, Energy Consumption Has Been Minimized and the Network Is a So-called Green Network.



## Cable and Network Copper Equipment

**Technical Specifications:** Copper Network Equipment Includes All Types of Network Cables, Patch Cords, Patch Panels and Other Peripheral Equipment in FTP, SFTP, STP, UTP and Various Sizes and Capacities, Which Are Selected and Installed According to the Technical Needs of the Project.



### Model: Amplifier

Output Power: 4 - 180 Watts

Power Supply: 220V

Weight: 9 kg

Dimensions: 330\*110\*420

### Model: Halogen Ceiling Speaker (3 Inch) (6 W)

Frame Size: 10 cm

Round Cutter Size: 9 cm

Thickness: 7.4 cm

Water Vapor Resistant (Suitable for Bathrooms)

**Model: 7-inch Sound Panel**

Android Operating System

USB &amp; SD Card

Wi-Fi &amp; Bluetooth

Control for Two Separate Audio Zones

100-Watt Output

Ability to install smart home applications

**Model: Ceiling Speaker (6.5 Inch)  
(50-100W)**

Frame Size: 23 cm

Round Cutter Size: 20.5 cm

Thickness: 12 cm

Crossover Range

Frameless

**Model: Ceiling Speaker (5 Inch)  
(20-50W)**

Frame Size: 18.5 cm

Round Cutter Size: 16.5 cm

Thickness: 7 cm

Water Vapor Resistant (Suitable for Swimming Pools)

**Model: Ceiling Speaker (5 Inch)  
(20-50W)**

Frame Size: 18.5 cm

Round Cutter Size: 16.5 cm

Thickness: 7 cm

Crossover Range

Bluetooth

**Model: 3.5-inch sound panel**

Bluetooth

4 speaker Outputs of 25 Watts

USB &amp; SD Card

Remote Control

**Model: Ceiling Speaker (5 Inch)  
(20-50W)**

Frame Size: 18.5 cm

Round Cutter Size: 16.5 cm

Thickness: 7 cm

Crossover Range



**Model: Ceiling Speaker (25 W)**

Frame Size: 18.5 cm

Round Cutter Size: 16 cm

Thickness: 7.4 cm

Frameless

Frameless

**Model: Ceiling Speaker (8 Inch)  
(70-100W)**

Frame Size: 28.5 cm

Round Cutter Size: 23 cm

Thickness: 16 cm

2-inch Tweeter

Crossover Range

**Model: Bluetooth Rock Speaker  
(5 Inch) (20-50W)**

Gray - Brown

Rain Resistant

Bluetooth Port (Suitable for the Garden)

**Model: Simple Rock Speaker  
(5 Inch) (20-50W)**

Gray - Brown

Rain Resistant

Crossover Range (Suitable for the Garden)

**Model: Ceiling Speaker (6 - 10 W)**

Frame Size: 18.8 cm

Round Cutter Size: 16.3 cm

Thickness: 6.2 cm

**Model: Ceiling Speaker (50W)**

Frame Size: 22.6 cm

Round Cutter Size: 20 cm

Thickness: 8.5 cm

**Model: Amplifier Board  
(with Power Supply)**

2 Speaker Outputs

AUX Port

Volume Adjustment Keys

**Model: Amplifier**

Output Power: 2 - 100 Watts

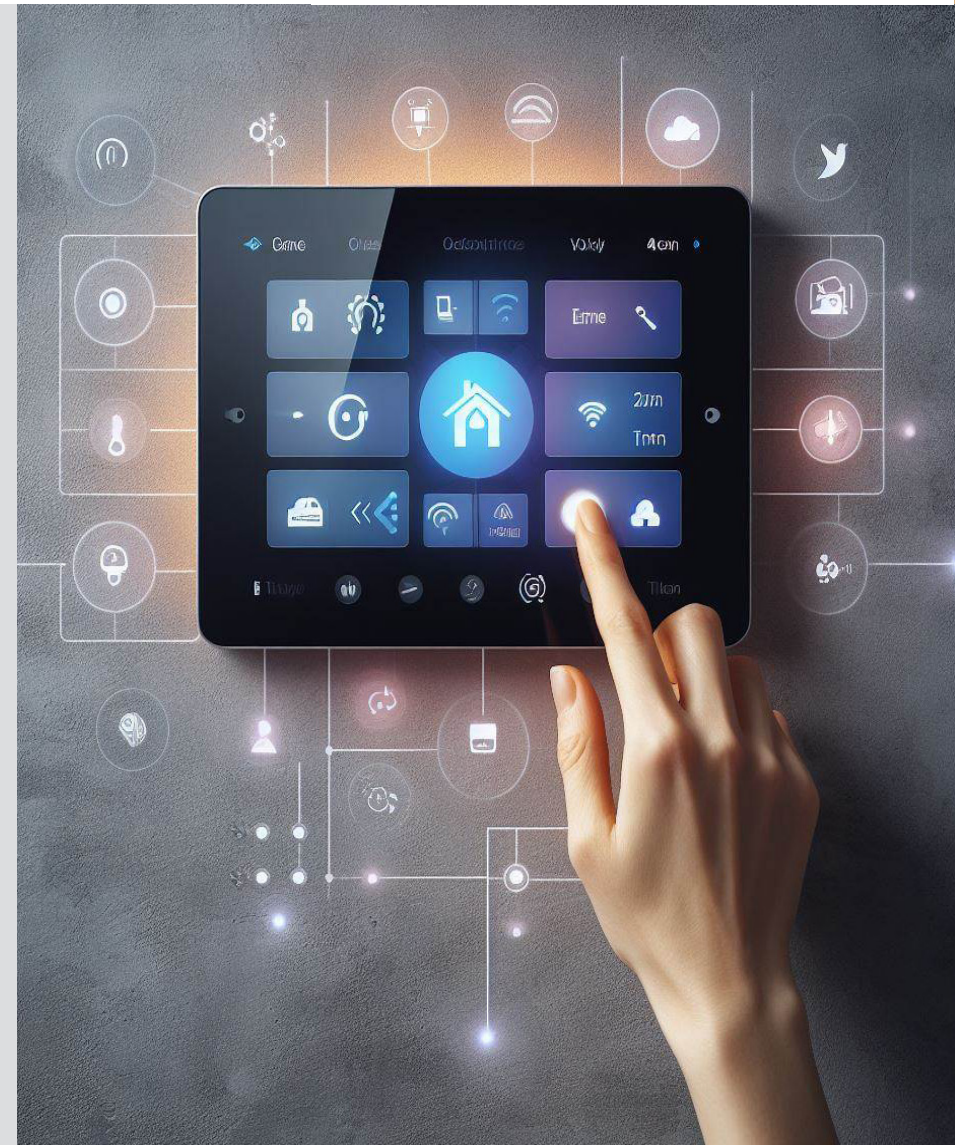
Power Supply: 220V

With mic-2, Echo &amp; Vibration Input

Bluetooth &amp; USB

**TOUCH PANEL**





**Model: N86H-4**

4-inch Display

Output Power: 4 x 10 to 20 Watts

Bluetooth

Dimensions: 86\*86\*11 mm

**Model: T10**

Android 11 Operating System

10-inch Display

Output Power: 8 x 20 Watts

Bluetooth &amp; Wi-Fi

Dimensions: 11.25\*162\*245.2 mm

**Model: N86N-4**

Android 11 Operating System

4-inch Display

Output Power: 2 x 10 to 20 Watts

Bluetooth &amp; Wi-Fi

Dimensions: 11\*86\*86 mm

**Model: F8-TUYA**

Android 8.1 Operating System

8-inch Display

Output Power: 2 x 20 Watts

Bluetooth

Dimensions: 11.5\*133\*250 mm

**Model: N86M-4**

Android 8.1 Operating System

4-inch Display

Output Power: 4 x 25 Watts

Bluetooth &amp; Wi-Fi

Dimensions: 86\*86\*11 mm

**Model: A7-PRO**

Android 8.1 Operating System

7-inch Display

Output Power: 8 x 20 Watts

Bluetooth &amp; Wi-Fi

Dimensions: 10.5\*125\*185 mm

**Model: F7-TUYA**

Android 8.1 Operating System

7-inch Display

Output Power: 2 x 10 Watts

Bluetooth

Dimensions: 11.5\*114.6\*235 mm

**Model: F10-TUYA**

Android 11 Operating System

10-inch Display

Output Power: 2 x 20 Watts

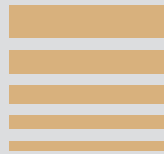
Bluetooth

Dimensions: 11.5\*162\*297 mm





## VIDEO DOORBELL







## Monitor Model: CU – S 43

### Specifications

- With touch keyboard
- No disruption to the functioning of the keys when touched with wet hands
- Can be used in both modes with and without a phone (Handsfree)
- Connecting the handset to the monitor body via magnet and with magnetic disconnecter
- The possibility of installation in both four-wire or five-wire methods
- Smart with the ability to connect to two doors and two cameras
- Ability to control outputs (enable or disable the door)
- Possibility of internal communication between units Videophone
- Possibility of taking photos and videos along with recording the client's voice
- Ability to take photos and videos in motion detection mode
- Additional lock or Video Doorbell calling capability
- Possibility to open the electric jack
- SD Micro memory connection
- 7 different melodies and can be adjusted for each doorbell



## Monitor Model: CU – S 72

### Specifications

- With touch keyboard
- No disruption to the functioning of the keys when touched with wet hands
- Can be used in both modes with and without a phone (Handsfree)
- Connecting the handset to the monitor body via magnet and with magnetic disconnecter
- The possibility of installation in both four-wire or five-wire methods
- Smart with the ability to connect to two doors and two cameras
- Ability to control outputs (enable or disable the door)
- Possibility of internal communication between units Videophone
- Possibility of taking photos and videos along with recording the client's voice
- Ability to take photos and videos in motion detection mode
- Additional lock or Video Doorbell calling capability
- Possibility to open the electric jack
- SD Micro memory connection
- 7 different melodies and can be adjusted for each doorbell



## Monitor Model: CU – K 77

### Specifications

With high-sensitivity 7 Touch Screen TFT
Ability to connect to Video Doorbell TV
Possibility to play the welcome song
Lighting control with Video Doorbell when you are not at home
Ability to connect up to 6 cameras (2 panels and 4 CCTV cameras)
Possibility of internal communication between units (INTERCOM)
Ability to choose a personal ringtone for the panel
Possibility of taking photos and videos with the client's voice
Possibility of automatic video recording at a specified time (DVR)
Possibility to connect to micro-SD memory
Ability to play music and display family album (Photo Frame)
Ability to leave voice messages for family members
Separate melody for each doorbell
16 melodies for panel ringing
Time and calendar display
Possibility to open the electric jack, additional lock or elevator call capability
Electronic answering machine with the ability to play your own voice as an answering machine



## Monitor Model: NAFIS VIDEO DOORBELL

### Specifications

Full color, fog-free night vision
Equipped with an alarm
Completely eliminate the whistling sound of the Video Doorbell panel
Maximum camera angle adjustment in four directions
Possibility to open the door and electric jack with a mobile phone in the new Bluetooth model
Rainproof (meets IP65 standard)

**Monitor Model: TAGGED with NAFIS VIDEO DOORBELL****Specifications**

- Full color, fog-free night vision
- Equipped with an alarm
- Completely eliminate the whistling sound of the Video Doorbell panel
- Maximum camera angle adjustment in four directions
- Possibility to open the door and electric jack with a mobile phone in the new Bluetooth model
- Rainproof (meets IP65 standard)

**Monitor Model: NEGAR CODING PANEL****Specifications**

- Touch keyboard and OLED display
- Ability to use up to 120 units on the video doorbell
- Ability to use conventional 4-wire and 5-wire analog monitors
- Very easy to install and set up
- Video doorbell with direct connection to security
- Possibility to open the door by password and also using a tag or card
- No need for coding and the ability to change the unit number if needed

**Monitor Model: NEGAR VIDEO DOORBELL****Specifications**

- With excellent night vision depth using LED light accelerator
- Ability to adjust the camera's viewing angle in four directions
- No disruption in the functioning of the keys due to touching with wet hands
- Moisture and dust resistant
- Possibility of installation in both four-wire and five-wire methods
- Enhanced sound quality
- Opening the door by card or tag without additional wiring in the door (card reader model)



## Monitor Model: FINGERPRINT CODING PANEL

### Specifications

OLED screen
Touch keyboard with excellent performance without disruption even in rainy weather
Excellent night vision depth using LED light accelerator
Possibility to open the door by fingerprint, password, or using a tag or card
Ability to add 300 fingerprints and delete fingerprints individually and completely
No need for coding and if desired, the ability to assign a desired number to the units
Ability to use conventional 4-wire and 5-wire analog monitors
Moisture and dust resistant
Very easy to install and set up
Usable up to 120 units
Direct contact with security

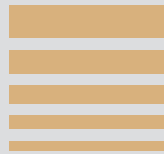


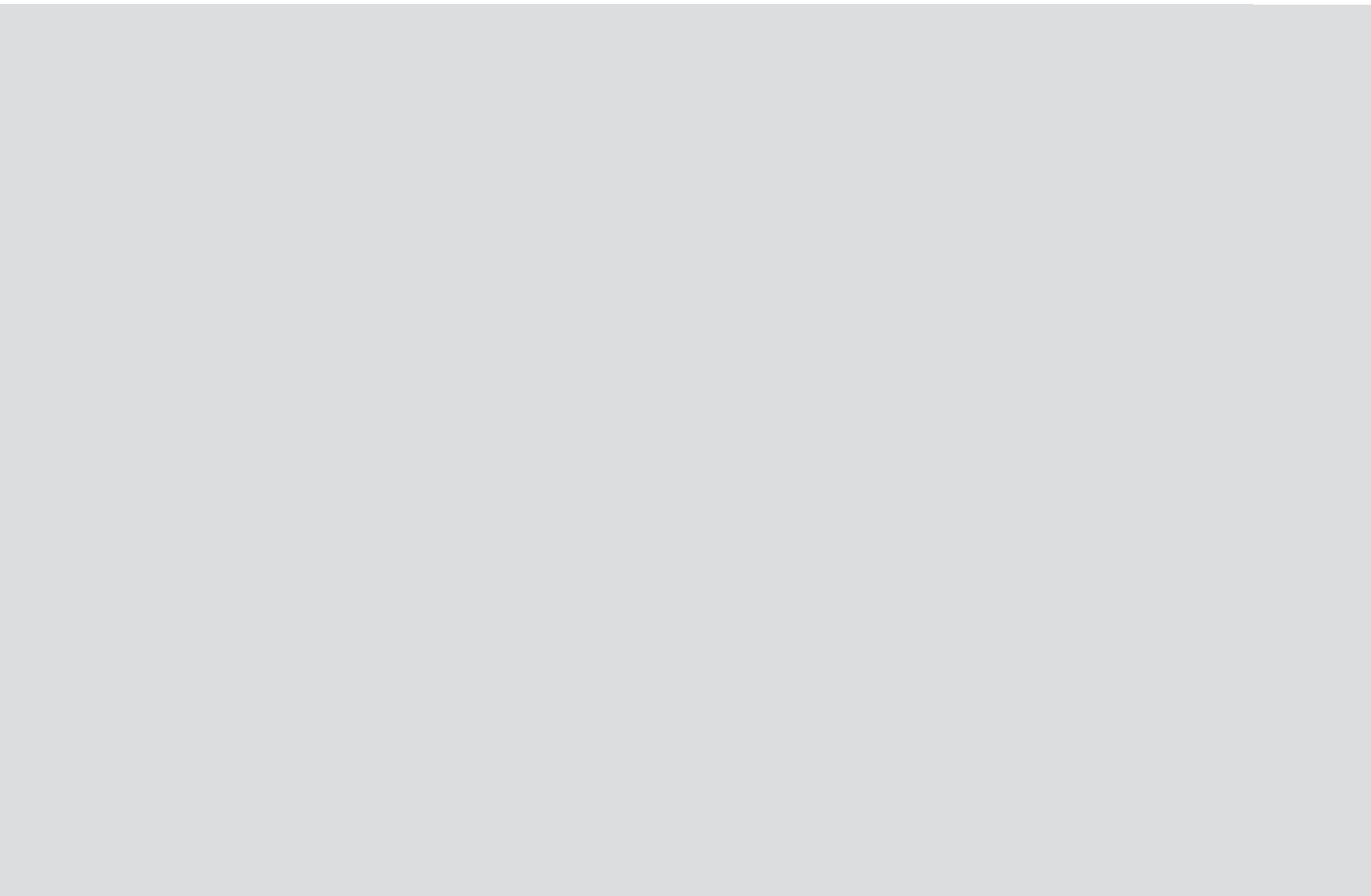
## Monitor Model: NEGIN CODING PANEL

### Specifications

Touch keyboard and LED color display
Usable up to 200 units
Ability to use conventional 4-wire analog monitors
Very easy installation and setup of video doorbell
Display date and time
Direct communication key with security
Possibility of opening the door by password or using a tag or card
Adding and removing tags and cards for each unit separately and the ability to delete all tags

**SMART HANDLE**





## Eyetech Smart Lock

Face Recognition ≤50 users

PIN Code ≤200 users

Cards ≤200 users

Finger Prints ≤50 users

App Support: U-smart or Tuya

Door Thickness: 40 to 120 mm

Working Temperature: 70 to -40 degrees Celsius

Working Humidity: 0 to 90% RH

Dimensions: 70 (width) - 421 (height) - 64.3 (thickness)

Mechanical Emergency Keys: 5 Number

Safety Alarms: Warning of attempted unauthorized entry and insufficient charge

Power Supply: Type C 7.4V Lithium Battery

Charge Retention Period: Up to 3 Months

Body Material: Aluminum Alloy

Remote Control: Upon Customer Request

Colour: Dark Gray - Mocha Brown

Compatible Current: 3 to 500 mA

Guarantee: 5 years guarantee and 10 years after sales service and support







## Ketrowa Smart Building

Amplifier & Application	
<b>Networking</b>	Standards compliance
<b>Supported Topologies</b>	Star
<b>Number of Input Channels</b>	4-4-4-8-2
<b>Remote Interface</b>	ArmoniaPlus™
<b>Analog</b>	4-4-4-8-2
<b>Channel Handling</b>	4Hi-4Hi-4Hi-8mono-2
<b>Number of Output Channels</b>	4Lo-4Lo-4Lo-2Hi-2Lo

RTU	
<b>Connections</b>	Inputs: MODBUS on the Platform RS485, 4-20 Milliampere, 0 to 5 Volts, Single-bit Digital Input, 2-bit Digital Input
	Outputs: LCD or SEVEN SEGMENT Display, MODBUS on the Platform RS485, 4-20 Milliampere, 0 to 5 Volts, Single-bit Digital Input, 2-bit Digital Input
Ability to Save Log, Ability to Display Information on the Web, Modularity and Ability to Change Inputs and Outputs, Has GSM-GPRS Data Transmission System.	

Wall Speaker (Built-in)	
<b>Suggested Power</b>	10-150W
<b>Resonant Frequency</b>	65Hz
<b>Nominal Impedance</b>	8Ω
<b>Frequency Range</b>	50-20KHz
<b>Sensitivity</b>	87dB   89dB   90dB



### Wall Speaker (Facing) 30,40,50 W

Maximum SPL	Max Power	Dimension(mm)	Weight(kg)	Frequency Range	Input Impedance	Input Voltage	Rated Power	Speaker Drivers	Sensitivity
102dB	60W	φ138×196	1.4	95Hz-20KHz	4Ω	70V/100V	30W	1×"1,1×"4	87dB
105dB	80W	φ169×211	2.8	85Hz-20KHz	4Ω	70V/100V	40W	1×"2,1×"5.25	89dB
107dB	100W	φ206×292	3.5	75Hz-20KHz	4Ω	70V/100V	50W	1×"2 , 1×"6.5	90dB

### Ceiling Speaker 35,50,60 W

Max Power	Dimension(mm)	Weight(kg)	Frequency Range	Nominal Impedance	Rated Power	Speaker Drivers	Sensitivity
70W	φ239*161.5	2	70Hz-20KHz	8Ω	35W	1×"1,1×"6.5	88dB
100W	φ225	4.2	65Hz-20KHz	4Ω	50W	1×"1,1×"6.5	106dB
120W	φ281*192.5	2.9	60Hz-20KHz	8Ω	60W	1×"2 , 1×"8	87dB

### Energy Measurement

Measurement Accuracy	2 Liters per Hour / 6 Liters per Hour	IP	68
Accuracy of Temperature Measurement	0.1 °C	Connections	MODBUS RS485
Display: It has a Display with the Ability to Display 2 Languages			

### Current Measurement (magnetic)

Measurement Accuracy	<1%	IP	IP68 for Sensor, For Pipes from 2 to 24 Inches ( < DN50 ), IP67 for Display
Absence of Obstacles in the Path of Liquid Flow, No Moving Parts, Ability to Measure Very Low Flow Rates, With the Ability to Adjust the Use of LCD with a Display			

Mini Amplifier					
Resolution	Material	Expand TF Card Memory	USB	Output Impedence	Output Power
600*1024 _ 240*320	IPS	32GB	Support	4-8Ω	2×10-25-30-60W(Digital Amplifier) - 8×25W(Digital Amplifier)
Frequency Response	Photo	Audio S/N ratio	Speaker	Bluetooth	RAM
20Hz-20KHz	JPG/E/BMP/GIF /PNG etc	98db	Constant resistance speaker	Version 4.0	2GB
ROM	Audio Input	Feature: Support Google Play/You Tube App   WIFI/ USB/TF/ Fm Radio/ Bluetooth			
16GB	AUX/one set	Video Format: MPEG-1/2/3/4/RM/RMVB/WMV/MOV   MIK/VOB/AVI/3GP/H/264 etc			

### Thermostat (AVES)

Equipped with a Touch Screen, Zigbee Protocol Support, Ability to Control Three Turns of the Fan Coil, The Ability to Run Different Scenarios, Ability to Control Through the Application, Ability to Control Hot and Cold Valve (2Pipe, 4Pipe), Functionality in Three Modes (Eco, Away, Turbo, Sleep), The ability to Save the Last State After Turning Off the Device, Ability to Operate Independently (In Case of Zigbee Network Disconnection), Display the Actual and Required Temperature, Fan Speed, System Status on the Screen.

### Sivacon Fixed Standing Boards

Installation Method	Built-in, Facing, Standing, Bridge Mounted
Body Material	Galvanized, Stainless Steel, Painted Steel (Electrostatic) and Polymer
Sheet Thickness (mm)	From 0.5 to 4 mm
IP	42-65

Rack	
<b>Wall Rack</b>	It Has Heights of 4, 6, 7 and 9 Units
<b>Standing Upright</b>	It Has 1 fan, 4 Wheels, 4 Fixed Bases and a Set of Bolts and Nuts - Has an Entrance For All Kinds of Cables - the Height of the Racks is 16, 21, 28, 36, 40 or 44 Units - the Depths Are 60, 80 and 100 cm and Above - With Glass Doors or Frame - the Possibility of Installing 1 to 4 Fans Inside the Racks

Fiber to the Home (FTTH)
In the Home Fiber Structure, Optical Fiber Is Stretched From the Local Telephone Exchange (OLT) to the Shared Equipment (ONT). Very High Bandwidth. Long Service Life. Due to the Use of Optical Fiber and Passive Elements in the Network, Energy Consumption Has Been Minimized and the Network Is a So-called Green Network.



**DEIQM**  
CERTIFICATION SERVICES  
**CERTIFICATE**

THE MANAGEMENT SYSTEM OF  
**TOSEE VA TAMIN BANA GOSTAR ASIA SAZEH CO. (KETROWA)**

NO.477, BETWEEN 1ST AND 2ND VAHID ST., SHAHID BEHESHTI BLVD., BAGHESTAN HWY., SHAHRAR, TEHRAN PROVINCE, IRAN

has been assessed and certified as meeting the requirements of

**ISO 14001:2015**

Environmental management system

**FOR THE FOLLOWING ACTIVITIES**

Comprehensive Supplier of Building Materials

CERTIFICATE REGISTRATION NO.: QM5933306  
ORIGINAL CERTIFICATION DATE: MAY 07, 2025  
CURRENT CERTIFICATION DATE: MAY 07, 2025  
CERTIFICATE EXPIRY DATE: MAY 07, 2028  
THIS CERTIFICATE REMAINS VALID SUBJECT TO SATISFACTORY SURVEILLANCE AUDITS.

*imark*  
Authorized Signatory  
EIQM Ltd. Certification Services  
info@eiqmcert.com



EIQM Ltd. Certification Services is a certification body for assessment of objective evidence and issuance of certificate. this certificate is issued on the basis of the independent authority of the EIQM certification services. we partner with you to offer independent services that will help you, streamline your processes and operate in a more sustainable manner.  
The validity of this certificate can be verified at [www.eiqmcert.com](http://www.eiqmcert.com)

**DEIQM**  
CERTIFICATION SERVICES  
**CERTIFICATE**

THE MANAGEMENT SYSTEM OF  
**TOSEE VA TAMIN BANA GOSTAR ASIA SAZEH CO. (KETROWA)**

NO.477, BETWEEN 1ST AND 2ND VAHID ST., SHAHID BEHESHTI BLVD., BAGHESTAN HWY., SHAHRAR, TEHRAN PROVINCE, IRAN

has been assessed and certified as meeting the requirements of

**ISO 45001:2018**

Occupational health and safety management system

**FOR THE FOLLOWING ACTIVITIES**

Comprehensive Supplier of Building Materials

CERTIFICATE REGISTRATION NO.: QM5933307  
ORIGINAL CERTIFICATION DATE: MAY 07, 2025  
CURRENT CERTIFICATION DATE: MAY 07, 2025  
CERTIFICATE EXPIRY DATE: MAY 07, 2028  
THIS CERTIFICATE REMAINS VALID SUBJECT TO SATISFACTORY SURVEILLANCE AUDITS.

*imark*  
Authorized Signatory  
EIQM Ltd. Certification Services  
info@eiqmcert.com



EIQM Ltd. Certification Services is a certification body for assessment of objective evidence and issuance of certificate. this certificate is issued on the basis of the independent authority of the EIQM certification services. we partner with you to offer independent services that will help you, streamline your processes and operate in a more sustainable manner.  
The validity of this certificate can be verified at [www.eiqmcert.com](http://www.eiqmcert.com)

**DEIQM**  
CERTIFICATION SERVICES  
**CERTIFICATE**

THE MANAGEMENT SYSTEM OF  
**TOSEE VA TAMIN BANA GOSTAR ASIA SAZEH CO. (KETROWA)**

NO.477, BETWEEN 1ST AND 2ND VAHID ST., SHAHID BEHESHTI BLVD., BAGHESTAN HWY., SHAHRAR, TEHRAN PROVINCE, IRAN

has been assessed and certified as meeting the requirements of

**ISO 9001:2015**

Quality management system

**FOR THE FOLLOWING ACTIVITIES**

Comprehensive Supplier of Building Materials

CERTIFICATE REGISTRATION NO.: QM5933305  
ORIGINAL CERTIFICATION DATE: MAY 07, 2025  
CURRENT CERTIFICATION DATE: MAY 07, 2025  
CERTIFICATE EXPIRY DATE: MAY 07, 2028  
THIS CERTIFICATE REMAINS VALID SUBJECT TO SATISFACTORY SURVEILLANCE AUDITS.

*imark*  
Authorized Signatory  
EIQM Ltd. Certification Services  
info@eiqmcert.com



EIQM Ltd. Certification Services is a certification body for assessment of objective evidence and issuance of certificate. this certificate is issued on the basis of the independent authority of the EIQM certification services. we partner with you to offer independent services that will help you, streamline your processes and operate in a more sustainable manner.  
The validity of this certificate can be verified at [www.eiqmcert.com](http://www.eiqmcert.com)

**DEIQM**  
CERTIFICATION SERVICES  
**CERTIFICATE**

THE MANAGEMENT SYSTEM OF  
**TOSEE VA TAMIN BANA GOSTAR ASIA SAZEH CO. (KETROWA)**

NO.477, BETWEEN 1ST AND 2ND VAHID ST., SHAHID BEHESHTI BLVD., BAGHESTAN HWY., SHAHRAR, TEHRAN PROVINCE, IRAN

has been assessed and certified as meeting the requirements of

**IMS**

ISO 9001:2015 , ISO 14001:2015 , ISO 45001:2018

**FOR THE FOLLOWING ACTIVITIES**

Comprehensive Supplier of Building Materials

CERTIFICATE REGISTRATION NO.: QM5933308  
ORIGINAL CERTIFICATION DATE: MAY 07, 2025  
CURRENT CERTIFICATION DATE: MAY 07, 2025  
CERTIFICATE EXPIRY DATE: MAY 07, 2028  
THIS CERTIFICATE REMAINS VALID SUBJECT TO SATISFACTORY SURVEILLANCE AUDITS.

*imark*  
Authorized Signatory  
EIQM Ltd. Certification Services  
info@eiqmcert.com



EIQM Ltd. Certification Services is a certification body for assessment of objective evidence and issuance of certificate. this certificate is issued on the basis of the independent authority of the EIQM certification services. we partner with you to offer independent services that will help you, streamline your processes and operate in a more sustainable manner.  
The validity of this certificate can be verified at [www.eiqmcert.com](http://www.eiqmcert.com)



[info@ketrowa.com](mailto:info@ketrowa.com)

[www.ketrowa.com](http://www.ketrowa.com)