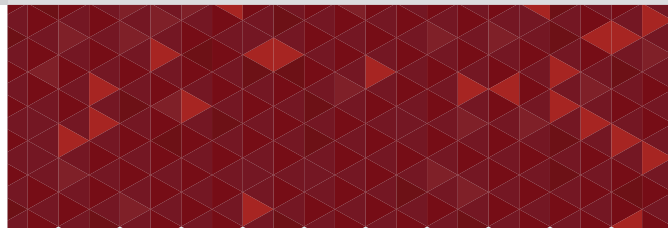




WWW.KETROWA.COM

ABOUT KETROWA

Providing materials and equipment for construction projects is always one of the most important concerns of builders and project managers. The importance of this issue stems from its direct impact on the project schedule, construction cost, and final building value. With the aim of facilitating the process of providing construction goods and taking into account its social responsibility, Ketrowa team has created a comprehensive and online system. In this system, builders will be able to prepare the schedule for the supply of materials and equipment for their construction projects and order the supply of goods based on the plan. These orders are made by comparing various products available in the system. Mass builders are the most important target customers of Ketrowa, and Ketrowa tries to supply and deliver goods on time to the consumer by logical planning for manufacturers and by providing cash and credit purchase model. Also, due to the reception and request for the supply of construction products for foreign markets, the supply of construction products for export markets is another main goal of Ketrowa. Ketrowa plans to transform the traditional and opaque market into a modern, high-speed and accurate market where buyers can get the quality goods they want at the most appropriate price.



MECHANICAL, HEATING
& COOLING FACILITIES

ELECTRICAL
FACILITIES

SANITARY

STRUCTURE

JOINERY &
FINISHING

Products are produced and
supplied in five branches:

Structure, Electrical
Facilities, Mechanical, Heating &
Cooling Facilities, Sanitary, Joinery &
Finishing., combining art and industry.

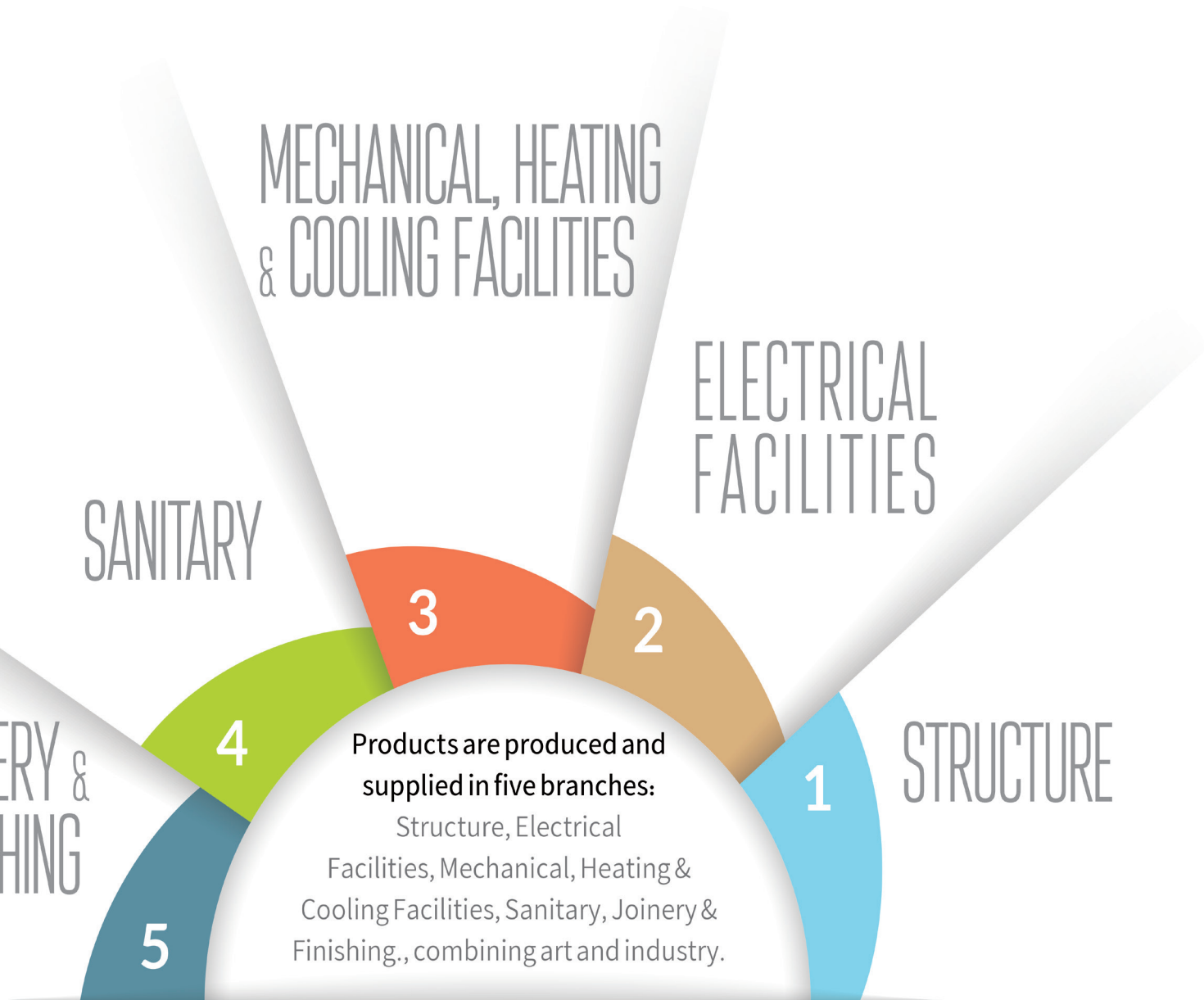
3

2

1

4

5





Package & Cast Iron Boiler







Cast Iron Package for Dual-Burner Ground Heating (Diesel-Gas) Class G

- Heat capacity 38000 to 110000 kcal/h
- Equipped with a 60 litre capacity spa reserve
- Ability to work with two types of gas and diesel burners
- Suitable for use in summer and mountain areas without natural gas fuel
- Ability to work at low water pressures
- Simultaneous use of domestic hot water and air conditioning
- The most suitable package for use in blower heating systems (air conditioner, fan coil, split duct, etc.)
- Complete combustion of fuel and minimal pollution in the environment
- High thermal efficiency, low fuel consumption, beautiful and durable
- Ability to install floor heating circuit
- The most suitable package for working with heavy and chalky water
- Quick and easy installation
- No formation of an electric pile between the package cast iron pot and the aluminum or steel radiator in order to avoid severe corrosion damage
- Ability to connect to hot water return
- Equipped with pump anti-seize system, water anti-freeze and electronic fault finder
- Ability to connect to building management system (BMS) and network
- Equipped with advanced intelligent control system

Dimensions of the Installation Site

Model	Dimensions (mm)	A	B	C	D	E	F	G	H
G		125	690	695	830	1040	60	190	330
Model	/	Unit	G380	G500	G620	G750	G750	G1100	
Nominal heat capacity (Urban Gas)	Kcal/hr		38000	50000	62000	75000	88000	110000	
	Kw		44	58	72	87	102	128	
	Btu/hr		152000	200000	248000	300000	352000	440000	
Diesel consumption	Kg/hr		3.5	4.6	5.8	6.9	8.2	10.2	
Maximum circulating water pressure	bar					3			
Urban gas pressure (G20)	mmH2O					180-200			
Natural gas consumption (urban)	m3/hr		4.4	6.8	7.3	8.8	10	13	
Number of boiler blades	blades		4	5	6	7	8	10	
Maximum burner flame length	mm		350	425	500	575	650	725	
Volume of hot water source	Litre					60			
Chimney diameter	mm					φ180			
Frequency/Voltage	V(AC)Hz					220/50			
Power consumption	W		36-70		37-78		180-195		
Ingress protection class	IP					54			
Height	mm					1100			
Width	mm					400			
Depth	mm		700		800	900	1000	1200	
Weight	Kg		205	240	275	310	345	430	



Cast Iron Package for Dual-Burner Ground Heating (Diesel-Gas) Class GL

- Equipped with pump anti-seize system, water anti-freeze and electronic fault finder.
- Equipped with advanced intelligent control system.
- Ability to work with two types of gas and diesel burners.
- Suitable for use in summer and mountain areas without natural gas fuel.
- Ability to work at low water pressures.
- Simultaneous use of domestic hot water and air conditioning.
- The most suitable package for use in blower heating systems (air conditioner, fan coil, split duct, etc.)
- Complete combustion of fuel and minimal pollution in the environment.
- Ability to install floor heating circuit.
- The most suitable package for working with heavy and chalky water.
- No formation of an electric pile between the package cast iron pot and the aluminum or steel radiator in order to avoid severe corrosion damage.
- Quick and easy installation.
- Ability to connect to building management system (BMS) and network.
- Heat capacity 88000 to 550000 kcal/h.
- Equipped with advanced intelligent control system.
- Maximum input power without burner.
- Suitable for residential units with a large area (villas, penthouses, etc.) or public environments with a large area (banks, schools, hospitals, swimming pools, etc.)

Dimensions of the Installation Site

Model	Dimensions (mm)	A	B	C	D	E	F	G	H	I	J	K	L
GLC		140	300	690	695	120	150	220	335	1,1/4"	φ180	400	740
GLE		150	505	765	850	140	130	220	410	2"	φ250	500	950
GLS		150	670	990	1020	120	115	250	510	3"	230x330	600	1140

Model /	Unit	GLC880	GLC1100	GLE1400	GLE1800	GLE2200	GLE2600	GLS3000	GLS3800	GLS4600	GLS5500	
Nominal heat capacity (Urban Gas)	Kcal/hr	88000	110000	140000	180000	220000	260000	300000	380000	460000	550000	
	Kw	102	128	164	211	257.5	304.5	344	442.5	541	639	
	Btu/hr	352000	440000	560000	720000	880000	1040000	1176000	1512000	1848000	2184000	
Diesel consumption	Kg/hr	8	10	13	17	20.5	24	28	35.5	43	51	
Urban gas pressure (G20)	mmH2O	180-200										
Natural gas consumption (urban)	m3/hr	10	13	16.5	21	26	30.5	35	42	54	65	
Maximum circulating water pressure	bar	3		5				6				
Frequency/Voltage	V(AC)/Hz	220/50								3x380/50		
Power consumption	W	180-195		506-595				564-735		465-763		
Ingress protection class	IP	54										
Number of boiler blades	blades	8	10	8	10	12	14	8	10	12	14	
Chimney diameter	mm	φ180		φ250				230x330				
Height	mm	750		950				1140				
Width	mm	400		500				600				
Depth	mm	1000	1200	1330	1550	1770	1990	1500	1740	1980	2220	
Weight	Kg	285	355	535	660	785	910	810	985	1160	1340	

Cast Iron Package for Gas-Burning Floor Heating (Atmospheric) Class E

- Equipped with pump anti-seize system, water anti-freeze and electronic fault finder
- Ability to connect to building management system (BMS) and network.
- Equipped with advanced intelligent control system.
- Ability to work at low water pressures.
- Simultaneous use of domestic hot water and air conditioning.
- The most suitable package for use in blower heating systems (air conditioner, fan coil, split duct, etc.)
- Complete combustion of fuel and minimal pollution in the environment.
- The most suitable package for working with heavy and chalky water.
- No formation of an electric pile between the package cast iron pot and the aluminum or steel radiator in order to avoid severe corrosion damage.
- Equipped with a 60 litre capacity spa reserve.
- Heat capacity 18000 to 54000 kcal/h
- The ability to install a gas stove in order to use the kitchen space optimally
- Can be installed in 0.3 square metres of kitchen
- No sound (atmospheric)
- Ability to work with one cubic metre of natural gas per hour
- Ability to install gas exhaust fan and floor heating circuit
- Complete combustion of fuel and minimal pollution in the environment
- The ability to separately adjust the water temperature of the package intelligently based on the outside temperature
- It has a quick heating system for sanitary hot water
- **PLUS**
 - A) Stronger customized pump for systems with more path loss such as split duct, fan coil, air washer, underfloor heating, etc.
 - B) module or automatic flame adjustment
 - C) Filling valve or electric boiler water supply
- **SMART**
 - A) Inverter pump that automatically changes pump speed according to needs.
 - B) module or automatic flame adjustment
 - B) Filling valve or electric boiler water supply

Dimensions of the Installation Site

Model	Dimensions (mm)	A	B	C	D	E	F
E240		660	180	500	240	150	3.4
E480		820	260	660	240	150	3.4
E600		910	310	750	175	180	1
E720		990	350	830	175	180	1



Cast Iron Package for Gas-Burning Floor Heating (Atmospheric) Class E

Model /	Unit	E240	E360	E480	E600	E720
Nominal heat capacity (Urban Gas)	Kcal/hr	18000	27000	36000	45000	54000
	Kw	21	31	42	53	63
	Btu/hr	72000	108000	1440000	180000	216000
Urban gas pressure (G20)	mmH2O	180-200				
Natural gas consumption (urban)	m3/hr	2.1	3.2	4.2	5.3	6.4
Maximum circulating water pressure	bar	3				
Number of boiler blades	blades	3	4	5	6	7
Volume of hot water source	litre	60				
Frequency/Voltage	V(AC)/Hz	220/50				
Power consumption	W	36-70			37-87	
Ingress protection class	IP	54				
Chimney diameter	mm	φ150				φ180
Height	mm	730	1365	730		
Width	mm	660	400	820	910	990
Depth	mm	550				
Weight	Kg	110	135	145	165	185



Cast Iron Package for Gas-Burning Floor Heating (Atmospheric) Class S

- Equipped with pump anti-seize system, water anti-freeze and electronic fault finder.
- Ability to connect to building management system (BMS) and network
- Equipped with advanced intelligent control system
- Ability to work at low water pressures
- Simultaneous use of domestic hot water and air conditioning
- The most suitable package for use in blower heating systems (air conditioner, fan coil, split duct, etc.)
- Complete combustion of fuel and minimal pollution in the environment
- High thermal efficiency, low fuel consumption, beautiful and durable
- The most suitable package for working with heavy and chalky water
- No formation of an electric pile between the package cast iron pot and the aluminum or steel radiator in order to avoid severe corrosion damage
- Ability to connect to hot water return
- Can be installed in 0.3 square metres of kitchen
- Ability to install gas exhaust fan and floor heating circuit
- Quick and easy installation
- Heat capacity 18000 to 54000 kcal/h
- Equipped with a 120 litre capacity spa reserve
- Stainless steel

Dimensions of the Installation Site

Model	Dimensions (mm)	A	B	C	D	E	F
S360		310	3"/4	615	ϕ150	480	240
S480		270	3"/4	615	ϕ150	480	240
S600		910	1"	620	ϕ150	570	175
S720		990	1"	620	ϕ180	650	175

Cast Iron Package for Gas-Burning Floor Heating (Atmospheric) Class S

Model /	Unit	S360	S480	S600	S720
Nominal heat capacity (Urban Gas)	Kcal/hr	27000	36000	45000	54000
	Kw	31	41	53	63
	Btu/hr	108000	144000	180000	216000
Urban gas pressure (G20)	mmH2O	180-200			
Natural gas consumption (urban)	m3/hr	3.2	4.2	5.3	6.4
Maximum circulating water pressure	bar	3			
Number of boiler blades	blades	4	5	6	7
Volume of hot water source	litre	120			
Frequency/Voltage	V(AC)/Hz	220/50			
Power consumption	W	36-70		37-78	
Ingress protection class	IP	54			
Chimney diameter	mm	ϕ150			ϕ180
Height	mm	1445			
Width	mm	480	480	570	650
Depth	mm	550			
Weight	Kg	149	167	185	210

Cast Iron Package for Gas-Burning Floor Heating (At-mospheric) Class SL

- Heat capacity 72000 to 171000 kcal/h
 - Cascading installation capability
 - Gas pipe size
 - Equipped with a 60 litre capacity spa reserve 1,252 / 5,000
- It is suitable for heating and supplying hot water to apartments and residential buildings with a capacity of 27,000 to 54,000 kilocalories per hour. It can be easily installed in the kitchen and its dimensions are designed in such a way that it is compatible with the standard of kitchen cabinets. It has low gas consumption, is completely silent, and due to the use of a cast iron pot with an excellent thermal surface, it has high thermal efficiency and is resistant to corrosion. Hot water is provided by a 120 litre coiled source, this source is galvanized and therefore hot water is completely hygienic. The cast iron package is equipped with safety valves for the heating water system as well as the hot water source. The temperature setting is done by the control system, which can be adjusted between 30 and 90 degrees Celsius. Water circulation in the system is done by the pump and has three states: low, medium and high. The water pressure of the system is adjusted by the water valve entering the device, and the working pressure is between 0.5 and 3 bar. The use of a cast iron pot and hot water storage source with a high cross section in the heating and hot water circuit and insensitivity to high hardness water have distinguished these packages from similar samples. The package is equipped with a smoke sensor and automatically turns off the device if the smoke outlet is blocked. It is possible to install a gas exhaust fan and produce a package suitable for the underfloor heating system.
- Equipped with pump anti-seize system, water anti-freeze and electronic fault finder.
 - Ability to connect to building management system (BMS) and network
 - Equipped with advanced intelligent control system
 - Ability to work at low water pressures
 - Simultaneous use of domestic hot water and air conditioning
 - The most suitable package for use in blower heating systems (air conditioner, fan coil, split duct, etc.)
 - Complete combustion of fuel and minimal pollution in the environment
 - High thermal efficiency, low fuel consumption, beautiful and durable
 - The most suitable package for working with heavy and chalky water
 - No formation of an electric pile between the package cast iron pot and the aluminum or steel radiator in order to avoid severe corrosion damage
 - Ability to connect to hot water return
 - Can be installed in 0.3 square metres of kitchen
 - Ability to install gas exhaust fan and floor heating circuit
 - Quick and easy installation

Dimensions of the Installation Site

Model	Dimensions (mm)	A	B	C	Gas pipe size
SL960		960	830	490	1/2"
SL1200		1120	990	600	1/2"
SL1600		1340	1210	700	1"
SL2020		1590	1460	825	1"
SL2300		1850	1720	925	1"

Cast Iron Package for Gas-Burning Floor Heating (At-Mospheric) Class SL

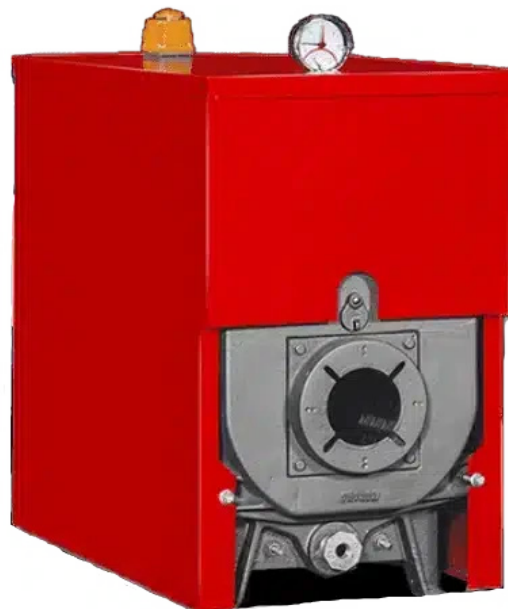
Model /	Unit	SL960	SL1200	SL1600	SL2020	SL2300
Nominal heat capacity (Urban Gas)	Kcal/hr	27000	90000	117000	144000	171000
	Kw	84	105	136	167	200
	Btu/hr	288000	360000	468000	576000	648000
Urban gas pressure (G20)	mmH2O	180-200				
Natural gas consumption (urban)	m3/hr	8.5	11	14	17	20
Maximum circulating water pressure	bar	3				
Number of boiler blades	blades	9	11	14	17	20
Volume of hot water source	litre	120				
Frequency/Voltage	V(AC)/Hz	220/50				
Power consumption	W	180-195		224-294		
Ingress protection class	IP	54				
Chimney diameter	mm	φ220				
Height	mm	765				
Width	mm	960	1120	1340	1950	1850
Depth	mm	580				
Weight	Kg	211	248	302	360	430



The cast iron boilers of the Industrial Company of Ketrowa are designed and manufactured for central heating and hot water consumption in residential, commercial, industrial, hospital and hotel buildings and complexes. Due to their finned design, these boilers can be easily transported and assembled in any engine room. The cast iron boilers of the Industrial Company of Ketrowa can be used with gas and diesel burners.

Ketrowa Cast Iron Hot Water Boiler – S300 Series (ShKar)

Model	Unit	S300-4	S300-5	S300-6	S300-7	S300-8	S300-9
Maximum Capacity	Kcal/h	33800	43700	53600	63400	73300	83100
Water Intake Volume	Liter	17.9	22.3	26.8	31.3	35.8	40.2
Chimney Opening Diameter	mm			144			
Combustion Chamber Volume	M3	0.0323	0.0403	0.0484	0.0565	0.0645	0.0726
Boiler Inlet & Outlet Connection Sizes	(")			1 1/2			
Torch Opening Diameter	mm			110			
Boiler Length	mm	600	682	764	846	928	1010
Net Weight	Kg	177	205	233	262	291	321
Maximum Allowable Temperature	°C			90			
Maximum Allowable Pressure	Bar			4			
Fuel Type				Natural Gas - Diesel			



The cast iron boilers of the Industrial Company of Ketrowa are designed and manufactured for central heating and hot water consumption in residential, commercial, industrial, hospital and hotel buildings and complexes. Due to their finned design, these boilers can be easily transported and assembled in any engine room. The cast iron boilers of the Industrial Company of Ketrowa can be used with gas and diesel burners.

Ketrowa Super Cast Iron Hot Water Boiler (ShKar)

Model	Unit	S400-5	S400-6	S400-7	S400-8	S400-9	S400-10	S400-11	S400-12
Thermal Capacity	Kcal/h	118700	146200	174500	202100	229600	258000	285500	313800
Water Intake Volume	Liter	55.2	65.9	76.5	87.1	97.8	108.4	119	129.7
Chimney Opening Diameter	mm	307							
Combustion Chamber Volume	M3	0.0663	0.0791	0.0919	0.105	0.1175	0.1303	0.1431	0.1559
Boiler Inlet & Outlet Connection Sizes	DN	2 1/2							
Torch Opening Diameter	mm	127							
Boiler Length	mm	918	1035	1152	1269	1386	1503	1620	1737
Net Weight	Kg	370	427	481	535	597	651	709	765
Maximum Allowable Temperature	°C	90							
Maximum Allowable Pressure	Bar	4							
Fuel Type	Natural Gas - Diesel								



Ketrowa wall-mounted heating packages are manufactured using Italian design and the highest quality components. These products are very suitable for buildings where it is not possible to create an engine room or where it is not cost-effective to establish an engine room. Wall-mounted packages are suitable for apartments ranging from 60 to 220 square meters in areas with a temperate climate and are effective on the same floor.

Ketrowa Wall Mounted Gas Boiler Elegant 24 FX2

Gas Type N.G **Gas Pressure** 2000 Pa

Standard EN 483,26,298

Capacity	Kw	24	28	32	40
Bath Water Flow. ($\Delta t=25^{\circ}\text{C}$)	L/Min	12	14	16	20
Input Power	Kw	24	28	32	40
Min. Input Power	Kw	7.2	8.4	9.6	12
Output Power	Kw	21.6	25.2	28.5	36
Min. Output Power	Kw	6.5	7.5	8.6	10.8
Input Voltage	V/Hz	220-240/50			
Electric Power	W	125			
Bath Water Pressure	Bar	0.3-6			
Heating Water Pressure	Bar	0.5-3			
Bath Water Temperature	$^{\circ}\text{C}$	30~60			
Heating Temperature	$^{\circ}\text{C}$	30~80			
Floor Heating	$^{\circ}\text{C}$	30~60			
Nox Level		Level 1			
Safety	IPX4				
Model		Elegant 24 fx2			



Ketrowa wall-mounted heating packages are manufactured using Italian design and the highest quality components. These products are very suitable for buildings where it is not possible to create an engine room or where it is not cost-effective to establish an engine room. Wall-mounted packages are suitable for apartments ranging from 60 to 220 square meters in areas with a temperate climate and are effective on the same floor.

Technical Specifications of the Wall-mounted Heating Package- Comfort 28 FH2 (ShKar)

Fuel Consumption	Natural Gas	Gas Pressure					20mbar
Capacity	Kw	20	24	28	32	40	
Consumption Hot Water Flow Rate ($\Delta t=25^{\circ}\text{C}$)	L/Min	10	12	14	16	20	
Input Power	Kw	20	24	28	32	40	
Minimum Input Power	Kw	6	7.2	8.4	9.6	12	
Output Power	Kw	18.3	21.6	25.2	28.5	36	
Minimum Output Power	Kw	5.5	6.5	7.5	8.6	10.8	
Power Supply Input	V/Hz	220~240/50					
Maximum Electrical Power Consumption	W	125				145	
Hot Water Pressure Range	Bar			0.3~6			
Maximum Working Pressure	Bar			3			
Maximum Working Pressure of the Device	Bar			0.5			
Hot Water Temperature Range	$^{\circ}\text{C}$			30~60			
Heating Circuit Temperature Range	$^{\circ}\text{C}$			30~80			
Operating Temperature Range in Underfloor Heating System	$^{\circ}\text{C}$			30~60			
NOX Class				Level One			
Electrical Protection Level				IPX4			



Ketrowa Package & Cast Iron Boiler (Irf)

Cast Iron Package for Dual-Burner Ground Heating (Diesel-Gas) Class G

- Heat capacity 38000 to 110000 kcal/h
- Equipped with a 60 litre capacity spa reserve
- Ability to work with two types of gas and diesel burners
- Suitable for use in summer and mountain areas without natural gas fuel
- Ability to work at low water pressures
- Simultaneous use of domestic hot water and air conditioning
- The most suitable package for use in blower heating systems (air conditioner, fan coil, split duct, etc.)
- Complete combustion of fuel and minimal pollution in the environment
- High thermal efficiency, low fuel consumption, beautiful and durable
- Ability to install floor heating circuit
- The most suitable package for working with heavy and chalky water
- Quick and easy installation
- No formation of an electric pile between the package cast iron pot and the aluminum or steel radiator in order to avoid severe corrosion damage
- Ability to connect to hot water return
- Equipped with pump anti-seize system, water anti-freeze and electronic fault finder
- Ability to connect to building management system (BMS) and network
- Equipped with advanced intelligent control system

Dimensions of the Installation Site								
Model	G							
Dimensions (mm)	A	B	C	D	E	F	G	H
	125	690	695	830	1040	60	190	330

Model	Unit	G380	G500	G620	G750	G880	G1100
Nominal heat capacity (Urban Gas)	Kcal/hr	38000	50000	62000	75000	88000	110000
	Kw	44	58	72	87	102	128
	Btu/hr	152000	200000	248000	300000	352000	440000
Diesel consumption	Kg/hr	3.5	4.6	5.8	6.9	8.2	10.2
Maximum circulating water pressure	Bar	3					
Urban gas pressure (G20)	mmH ₂ O	180-200					
Natural gas consumption (urban)	m ³ /hr	4.4	6.8	7.3	8.8	10	13
Number of boiler blades	Blades	4	5	6	7	8	10
Maximum burner flame length	mm	350	425	500	575	650	725
Volume of hot water source	Litre	60					
Chimney diameter	mm	ϕ180					
Frequency/Voltage	V(AC)Hz	220/50					
Power consumption	W	36-70		37-78		180-195	
Ingress protection class	IP	54					
Height	mm	1100					
Width	mm	400					
Depth	mm	700		800	900	1000	1200
Weight	Kg	205	240	275	310	345	430

Cast Iron Package for Dual-Burner Ground Heating (Diesel-Gas) Class GL

- Equipped with pump anti-seize system, water anti-freeze and electronic fault finder.
- Equipped with advanced intelligent control system.
- Ability to work with two types of gas and diesel burners.
- Suitable for use in summer and mountain areas without natural gas fuel.
- Ability to work at low water pressures.
- Simultaneous use of domestic hot water and air conditioning.
- The most suitable package for use in blower heating systems (air conditioner, fan coil, split duct, etc.)
- Complete combustion of fuel and minimal pollution in the environment.
- Ability to install floor heating circuit.
- The most suitable package for working with heavy and chalky water.
- No formation of an electric pile between the package cast iron pot and the aluminum or steel radiator in order to avoid severe corrosion damage.
- Quick and easy installation.
- Ability to connect to building management system (BMS) and network.
- Heat capacity 88000 to 550000 kcal/h.
- Equipped with advanced intelligent control system.
- Maximum input power without burner.
- Suitable for residential units with a large area (villas, penthouses, etc.) or public environments with a large area (banks, schools, hospitals, swimming pools, etc.)

Dimensions of the Installation Site													
Model	Dimensions (mm)	A	B	C	D	E	F	G	H	I	J	K	L
GLC		140	300	690	695	120	150	220	335	1,1/4"	φ180	400	740
GLE		150	505	765	850	140	130	220	410	2"	φ250	500	950
GLS		150	670	990	1020	120	115	250	510	3"	230x330	600	1140

Model	Unit	GLC880	GLC1100	GLE1400	GLE1800	GLE2200	GLE2600	GLS3000	GLS3800	GLS4600	GLS5500
Nominal heat capacity (Urban Gas)	Kcal/hr	88000	110000	140000	180000	220000	260000	300000	380000	460000	550000
	Kw	102	128	164	211	257.5	304.5	344	442.5	541	639
	Btu/hr	352000	440000	560000	720000	880000	1040000	1176000	1512000	1848000	2184000
Diesel consumption	Kg/hr	8	10	13	17	20.5	24	28	35.5	43	51
Maximum circulating water pressure	Bar	3		5				6			
Urban gas pressure (G20)	mmH ₂ O	180-200									
Natural gas consumption (urban)	m ³ /hr	10	13	16.5	21	26	30.5	35	42	54	65
Number of boiler blades	Blades	8	10	8	10	12	14	8	10	12	14
Chimney diameter	mm	φ180		φ250				230x330			
Frequency/Voltage	V(AC)H z	220/50								3x380/50	
Power consumption	W	180-195		506-595				564-735		465-763	
Ingress protection class	IP	54									
Height	mm	750		950				1140			
Width	mm	400		500				600			
Depth	mm	1000	1200	1330	1550	1770	1990	1500	1740	1980	2220
Weight	Kg	285	355	535	660	785	910	810	985	1160	1340

Cast Iron Package for Gas-Burning Floor Heating (Atmospheric) Class E

- Equipped with pump anti-seize system, water anti-freeze and electronic fault finder
- Ability to connect to building management system (BMS) and network.
- Equipped with advanced intelligent control system.
- Ability to work at low water pressures.
- Simultaneous use of domestic hot water and air conditioning.
- The most suitable package for use in blower heating systems (air conditioner, fan coil, split duct, etc.)
- Complete combustion of fuel and minimal pollution in the environment.
- The most suitable package for working with heavy and chalky water.
- No formation of an electric pile between the package cast iron pot and the aluminum or steel radiator in order to avoid severe corrosion damage.
- Equipped with a 60 litre capacity spa reserve.
- Heat capacity 18000 to 54000 kcal/h
- The ability to install a gas stove in order to use the kitchen space optimally
- Can be installed in 0.3 square metres of kitchen
- No sound (atmospheric)
- Ability to work with one cubic metre of natural gas per hour
- Ability to install gas exhaust fan and floor heating circuit
- Complete combustion of fuel and minimal pollution in the environment
- The ability to separately adjust the water temperature of the package intelligently based on the outside temperature
- It has a quick heating system for sanitary hot water

PLUS

- A) Stronger customized pump for systems with more path loss such as split duct, fan coil, air washer, underfloor heating, etc.
- B) module or automatic flame adjustment
- C) Filling valve or electric boiler water supply

SMART

- A) Inverter pump that automatically changes pump speed according to needs.
- B) module or automatic flame adjustment
- B) Filling valve or electric boiler water supply

Dimensions of the Installation Site							
Model	Dimensions (mm)	A	B	C	D	E	F
E240		660	180	500	240	150	3.4
E480		820	260	660	240	150	3.4
E600		910	310	750	175	180	1
E720		990	350	830	175	180	1

Model	Unit	E240	E360	E480	E600	E720
Nominal heat capacity (Urban Gas)	Kcal/hr	18000	27000	36000	45000	54000
	Kw	21	31	42	53	63
	Btu/hr	72000	108000	144000	180000	216000
Diesel consumption	Kg/hr					
Maximum circulating water pressure	Bar	3				
Urban gas pressure (G20)	mmH ₂ O	180-200				
Natural gas consumption (urban)	m ³ /hr	2.1	3.2	4.2	5.3	6.4
Number of boiler blades	Blades	3	4	5	6	7
Volume of hot water source	Litre	60				
Chimney diameter	mm	ϕ150				ϕ180
Frequency/Voltage	V(AC)Hz	220/50				
Power consumption	W	36-70			37-87	
Ingress protection class	IP	54				
Height	mm	730	1365	730		
Width	mm	660	400	820	910	990
Depth	mm	550				
Weight	Kg	110	135	145	165	185

Cast Iron Package for Gas-Burning Floor Heating (Atmospheric) Class S

- Equipped with pump anti-seize system, water anti-freeze and electronic fault finder.
- Ability to connect to building management system (BMS) and network
- Equipped with advanced intelligent control system
- Ability to work at low water pressures
- Simultaneous use of domestic hot water and air conditioning
- The most suitable package for use in blower heating systems (air conditioner, fan coil, split duct, etc.)
- Complete combustion of fuel and minimal pollution in the environment
- High thermal efficiency, low fuel consumption, beautiful and durable
- The most suitable package for working with heavy and chalky water
- No formation of an electric pile between the package cast iron pot and the aluminum or steel radiator in order to avoid severe corrosion damage
- Ability to connect to hot water return
- Can be installed in 0.3 square metres of kitchen
- Ability to install gas exhaust fan and floor heating circuit
- Quick and easy installation
- Heat capacity 18000 to 54000 kcal/h
- Equipped with a 120-litre capacity spa reserve
- Stainless steel

Dimensions of the Installation Site							
Model	Dimensions (mm)	A	B	C	D	E	F
S360		310	3/4"	615	φ150	480	240
S480		270	3/4"	615	φ150	480	240
S600		910	1"	620	φ150	570	175
S720		990	1"	620	φ180	650	175

Model	Unit	S360	S480	S600	S720
Nominal heat capacity (Urban Gas)	Kcal/hr	27000	36000	45000	54000
	Kw	31	41	53	63
	Btu/hr	108000	144000	180000	216000
Maximum circulating water pressure	Bar	3			
Urban gas pressure (G20)	mmH ₂ O	180-200			
Natural gas consumption (urban)	m ³ /hr	3.2	4.2	5.3	6.4
Number of boiler blades	Blades	4	5	6	7
Volume of hot water source	Litre	120			
Chimney diameter	mm	ϕ150			ϕ180
Frequency/Voltage	V(AC)Hz	220/50			
Power consumption	W	36-70		37-78	
Ingress protection class	IP	54			
Height	mm	1445			
Width	mm	480	480	570	650
Depth	mm	550			
Weight	Kg	149	167	185	210

Cast Iron Package for Gas-Burning Floor Heating (Atmospheric) Class SL

- Heat capacity 72000 to 171000 kcal/h
- Cascading installation capability
- Gas pipe size
- Equipped with a 60 litre capacity spa reserve 1,252 / 5,000

It is suitable for heating and supplying hot water to apartments and residential buildings with a capacity of 27,000 to 54,000 kilocalories per hour. It can be easily installed in the kitchen and its dimensions are designed in such a way that it is compatible with the standard of kitchen cabinets. It has low gas consumption, is completely silent, and due to the use of a cast iron pot with an excellent thermal surface, it has high thermal efficiency and is resistant to corrosion. Hot water is provided by a 120 litre coiled source, this source is galvanized and therefore hot water is completely hygienic. The cast iron package is equipped with safety valves for the heating water system as well as the hot water source. The temperature setting is done by the control system, which can be adjusted between 30 and 90 degrees Celsius. Water circulation in the system is done by the pump and has three states: low, medium and high. The water pressure of the system is adjusted by the water valve entering the device, and the working pressure is between 0.5 and 3 bar. The use of a cast iron pot and hot water storage source with a high cross section in the heating and hot water circuit and insensitivity to high hardness water have distinguished these packages from similar samples. The package is equipped with a smoke sensor and automatically turns off the device if the smoke outlet is blocked. It is possible to install a gas exhaust fan and produce a package suitable for the underfloor heating system.

- Equipped with pump anti-seize system, water anti-freeze and electronic fault finder.
- Ability to connect to building management system (BMS) and network
- Equipped with advanced intelligent control system
- Ability to work at low water pressures
- Simultaneous use of domestic hot water and air conditioning
- The most suitable package for use in blower heating systems (air conditioner, fan coil, split duct, etc.)
- Complete combustion of fuel and minimal pollution in the environment
- High thermal efficiency, low fuel consumption, beautiful and durable
- The most suitable package for working with heavy and chalky water
- No formation of an electric pile between the package cast iron pot and the aluminum or steel radiator in order to avoid severe corrosion damage
- Ability to connect to hot water return
- Can be installed in 0.3 square metres of kitchen
- Ability to install gas exhaust fan and floor heating circuit
- Quick and easy installation

Dimensions of the Installation Site					
Model	Dimensions (mm)	A	B	C	Gas Pipe Size
SL960		960	830	490	½"
SL1200		1120	990	600	½"
SL1600		1340	1210	700	1"
SL2020		1590	1460	825	1"
SL2300		1850	1720	925	1"

Model	Unit	SL960	SL1200	SL1600	SL2020	SL2300
Nominal heat capacity (Urban Gas)	Kcal/hr	27000	90000	117000	144000	171000
	Kw	84	105	136	167	200
	Btu/hr	288000	360000	468000	576000	648000
Maximum circulating water pressure	Bar	3				
Urban gas pressure (G20)	mmH ₂ O	180-200				
Natural gas consumption (urban)	m ³ /hr	8.5	11	14	17	20
Number of boiler blades	Blades	9	11	14	17	20
Volume of hot water source	Litre	120				
Chimney diameter	mm	ϕ220				
Frequency/Voltage	V(AC)Hz	220/50				
Power consumption	W	180-195		224-294		
Ingress protection class	IP	54				
Height	mm	765				
Width	mm	960	1120	1340	1950	1850
Depth	mm	580				
Weight	Kg	211	248	302	360	430



DEIQM
CERTIFICATION SERVICES
CERTIFICATE

THE MANAGEMENT SYSTEM OF
TOSEE VA TAMIN BANA GOSTAR ASIA SAZEH CO. (KETROWA)

NO.477, BETWEEN 1ST AND 2ND VAHD ST., SHAHID BEHESHTI BLVD., BAGHESTAN HWY., SHAHRDAR, TEHRAN PROVINCE, IRAN

has been assessed and certified as meeting the requirements of
ISO 14001:2015

Environmental management system

FOR THE FOLLOWING ACTIVITIES

Comprehensive Supplier of Building Materials

CERTIFICATE REGISTRATION NO.: QM5933306
ORIGINAL CERTIFICATION DATE: MAY 07, 2025
CURRENT CERTIFICATION DATE: MAY 07, 2025
CERTIFICATE EXPIRY DATE: MAY 07, 2028
THIS CERTIFICATE REMAINS VALID SUBJECT TO SATISFACTORY SURVEILLANCE AUDITS.

insark
Authorized Signatory
EIQM Ltd. Certification Services
info@eiqmcert.com



EIQM Ltd. Certification Services is a certification body for assessment of objective evidence and issuance of certificate. this certificate is issued on the basis of the independent authority of the EIQM certification services. we partner with you to offer independent services that will help you, streamline your processes and operate in a more sustainable manner.
The validity of this certificate can be verified at www.eiqmcert.com



DEIQM
CERTIFICATION SERVICES
CERTIFICATE

THE MANAGEMENT SYSTEM OF
TOSEE VA TAMIN BANA GOSTAR ASIA SAZEH CO. (KETROWA)

NO.477, BETWEEN 1ST AND 2ND VAHD ST., SHAHID BEHESHTI BLVD., BAGHESTAN HWY., SHAHRDAR, TEHRAN PROVINCE, IRAN

has been assessed and certified as meeting the requirements of
ISO 45001:2018

Occupational health and safety management system

FOR THE FOLLOWING ACTIVITIES

Comprehensive Supplier of Building Materials

CERTIFICATE REGISTRATION NO.: QM5933307
ORIGINAL CERTIFICATION DATE: MAY 07, 2025
CURRENT CERTIFICATION DATE: MAY 07, 2025
CERTIFICATE EXPIRY DATE: MAY 07, 2028
THIS CERTIFICATE REMAINS VALID SUBJECT TO SATISFACTORY SURVEILLANCE AUDITS.

insark
Authorized Signatory
EIQM Ltd. Certification Services
info@eiqmcert.com



EIQM Ltd. Certification Services is a certification body for assessment of objective evidence and issuance of certificate. this certificate is issued on the basis of the independent authority of the EIQM certification services. we partner with you to offer independent services that will help you, streamline your processes and operate in a more sustainable manner.
The validity of this certificate can be verified at www.eiqmcert.com



DEIQM
CERTIFICATION SERVICES
CERTIFICATE

THE MANAGEMENT SYSTEM OF
TOSEE VA TAMIN BANA GOSTAR ASIA SAZEH CO. (KETROWA)

NO.477, BETWEEN 1ST AND 2ND VAHD ST., SHAHID BEHESHTI BLVD., BAGHESTAN HWY., SHAHRDAR, TEHRAN PROVINCE, IRAN

has been assessed and certified as meeting the requirements of
ISO 9001:2015

Quality management system

FOR THE FOLLOWING ACTIVITIES

Comprehensive Supplier of Building Materials

CERTIFICATE REGISTRATION NO.: QM5933305
ORIGINAL CERTIFICATION DATE: MAY 07, 2025
CURRENT CERTIFICATION DATE: MAY 07, 2025
CERTIFICATE EXPIRY DATE: MAY 07, 2028
THIS CERTIFICATE REMAINS VALID SUBJECT TO SATISFACTORY SURVEILLANCE AUDITS.

insark
Authorized Signatory
EIQM Ltd. Certification Services
info@eiqmcert.com



EIQM Ltd. Certification Services is a certification body for assessment of objective evidence and issuance of certificate. this certificate is issued on the basis of the independent authority of the EIQM certification services. we partner with you to offer independent services that will help you, streamline your processes and operate in a more sustainable manner.
The validity of this certificate can be verified at www.eiqmcert.com



DEIQM
CERTIFICATION SERVICES
CERTIFICATE

THE MANAGEMENT SYSTEM OF
TOSEE VA TAMIN BANA GOSTAR ASIA SAZEH CO. (KETROWA)

NO.477, BETWEEN 1ST AND 2ND VAHD ST., SHAHID BEHESHTI BLVD., BAGHESTAN HWY., SHAHRDAR, TEHRAN PROVINCE, IRAN

has been assessed and certified as meeting the requirements of
IMS

ISO 9001:2015 , ISO 14001:2015 , ISO 45001:2018

FOR THE FOLLOWING ACTIVITIES

Comprehensive Supplier of Building Materials

CERTIFICATE REGISTRATION NO.: QM5933308
ORIGINAL CERTIFICATION DATE: MAY 07, 2025
CURRENT CERTIFICATION DATE: MAY 07, 2025
CERTIFICATE EXPIRY DATE: MAY 07, 2028
THIS CERTIFICATE REMAINS VALID SUBJECT TO SATISFACTORY SURVEILLANCE AUDITS.

insark
Authorized Signatory
EIQM Ltd. Certification Services
info@eiqmcert.com



EIQM Ltd. Certification Services is a certification body for assessment of objective evidence and issuance of certificate. this certificate is issued on the basis of the independent authority of the EIQM certification services. we partner with you to offer independent services that will help you, streamline your processes and operate in a more sustainable manner.
The validity of this certificate can be verified at www.eiqmcert.com





info@ketrowa.com
www.ketrowa.com