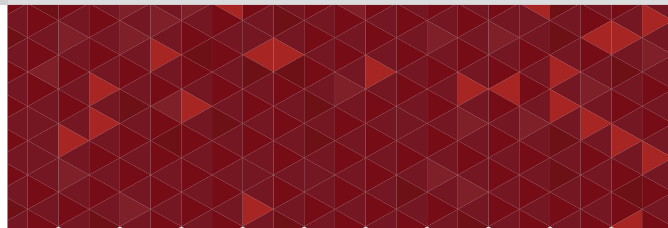




WWW.KETROWA.COM

ABOUT KETROWA

Providing materials and equipment for construction projects is always one of the most important concerns of builders and project managers. The importance of this issue stems from its direct impact on the project schedule, construction cost, and final building value. With the aim of facilitating the process of providing construction goods and taking into account its social responsibility, Ketrowa team has created a comprehensive and online system. In this system, builders will be able to prepare the schedule for the supply of materials and equipment for their construction projects and order the supply of goods based on the plan. These orders are made by comparing various products available in the system. Mass builders are the most important target customers of Ketrowa, and Ketrowa tries to supply and deliver goods on time to the consumer by logical planning for manufacturers and by providing cash and credit purchase model. Also, due to the reception and request for the supply of construction products for foreign markets, the supply of construction products for export markets is another main goal of Ketrowa. Ketrowa plans to transform the traditional and opaque market into a modern, high-speed and accurate market where buyers can get the quality goods they want at the most appropriate price.



MECHANICAL, HEATING
& COOLING FACILITIES

ELECTRICAL
FACILITIES

SANITARY

STRUCTURE

JOINERY &
FINISHING

Products are produced and
supplied in five branches:

Structure, Electrical
Facilities, Mechanical, Heating &
Cooling Facilities, Sanitary, Joinery &
Finishing., combining art and industry.

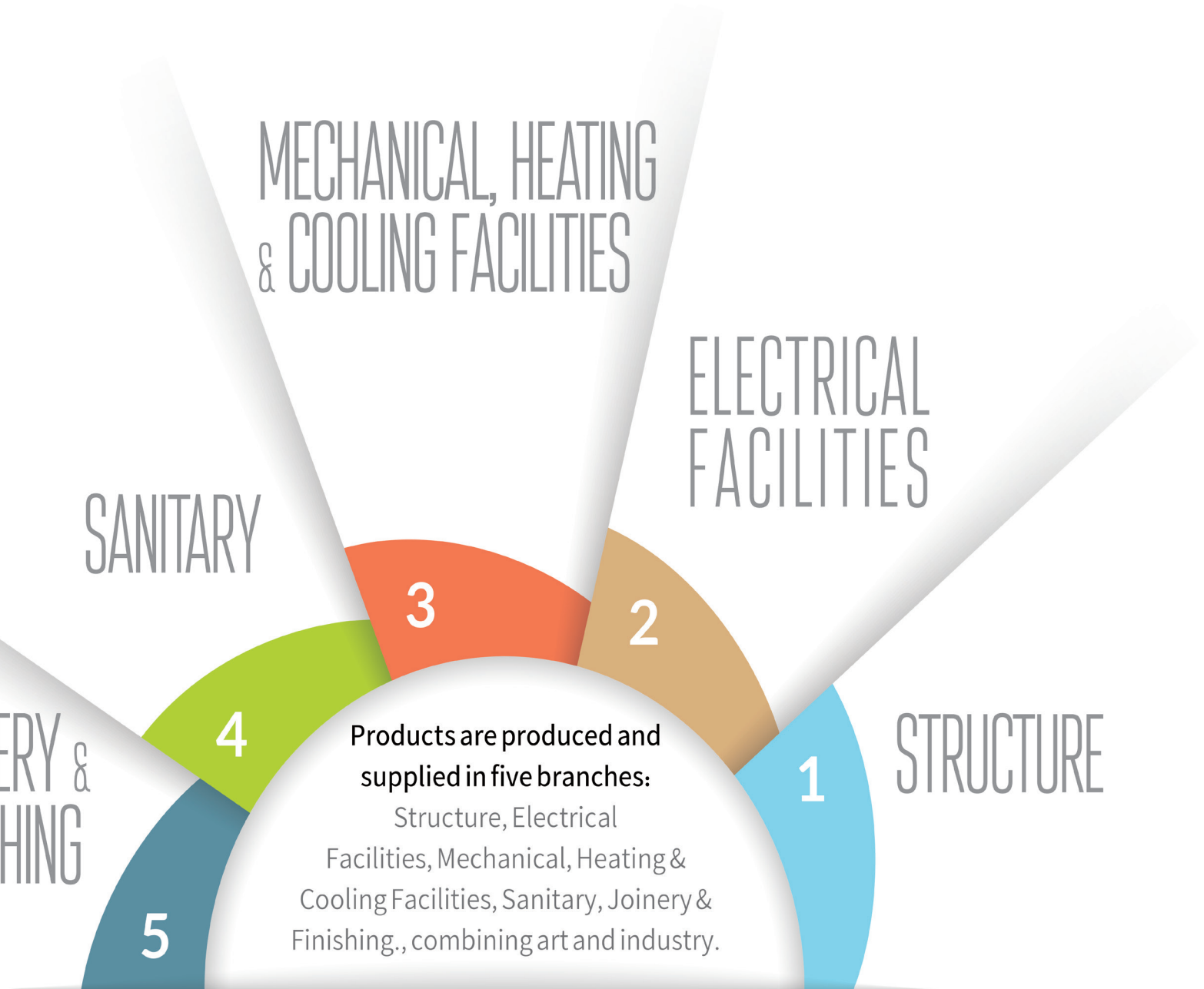
3

2

1

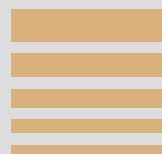
4

5





Lighting



Light: Model: Derakhshan LED Facing (Back light)

Derakhshan lights are produced and supplied in different models and dimensions in the form of built-in and facing. This type of light has the ability to install all kinds of FPL-LED lamps and LED modules. One of the characteristics of these types of lights is the proper light distribution in the form of backlight.

Technical Specification:

- Compatibility with the environment
- Electrostatic powder coating
- Polystyrene diffuser
- Color temperature: 3000-6500
- Backlight module
- Color rendering index: More than 80%
- Power Factor: Above 90%
- IP 40
- Ceramic terminal
- THD less than 10
- The desired product is produced with moonlight, sunny and natural colors from 2700 to 6500 Kelvin.
- The possibility of increasing or decreasing the luminous flux by 8%

Power (W)	Luminous Flux (LM)	Lumens per Watt (L/M)	Color Temperature (K)	Dimensions (L*H*W)	Weight (Kg)
50	5000	100	3000-6500	60*6*60	4
50	5000	100	3000-6500	60*6*30	3
50	5000	100	3000-6500	50*6*50	3
40	4000	100	3000-6500	40*6*40	2
30	3000	100	3000-6500	30*6*30	1.5
50	5000	100	3000-6500	115*6*30	4
75	7500	100	3000-6500	60*6*60	4
75	7500	100	3000-6500	115*6*30	4
75	7500	100	3000-6500	50*6*50	3
75	7500	100	3000-6500	60*6*30	3

**30X115****30X60****50X50
40X40
30X30****60X60**

Light: Model: Derakhshan LED Built in(Back light)

It is designed for use in commercial centers, exhibitions, hospitals, offices, etc., and it can be easily installed in all types of false ceilings, 60 x 60 tiles, fixed Knaf leaf plaster, etc. in a built-in form.

Technical Specification:

- Backlight module
- Ceramic terminal
- Compatibility with the environment
- Electrostatic powder coating
- Polystyrene diffuser
- THD less than 10
- Color temperature: 3000-6500
- Flicker Free
- Power Factor: Above 90%
- IP 40
- Color rendering index: more than 80%

Power (W)	Luminous Flux (LM)	Lumens per Watt (L/M)	Color Temperature (K)	Dimensions (L*H*W)	Weight (Kg)
50	5000	100	3000-6500	60*6*60	4
50	5000	100	3000-6500	60*6*30	3
40	4000	100	3000-6500	40*6*40	2
30	3000	100	3000-6500	30*6*30	1.5
50	5000	100	3000-6500	115*6*30	4
75	7500	100	3000-6500	60*6*60	4
75	7500	100	3000-6500	115*6*30	4
75	7500	100	3000-6500	60*6*30	3



30X115



30X60



**40X40
30X30**



60X60

Light: Model: Venos LED Built in(Back light)

It is designed for use in commercial centers, exhibitions, hospitals, offices, etc., and it can be easily installed in all types of false ceilings, 60 x 60 tiles, fixed Knaf leaf plaster, etc. in a built-in form.

Technical Specification:

- Compatibility with the environment
- Electrostatic powder coating
- Polystyrene diffuser
- Color temperature: 3000-6500
- Flicker Free
- Backlight module
- Color rendering index: more than 80%
- Power factor: above 90%
- IP 40
- Ceramic terminal
- THD less than 10

Power (W)	Luminous Flux (LM)	Lumens per Watt (L/M)	Color Temperature (K)	Dimensions (L*H*W)	Weight (Kg)
50	5000	100	3000-6500	60*6*60	4
75	7500	100	3000-6500	60*6*60	4



Light: Model: Venos FPL LED-FPL Built-in and Facing (60*60) & (50*50)

It is designed for use in commercial centers, exhibitions, hospitals, offices, etc., and it can be easily installed in all types of false ceilings, 60 x 60 tiles, fixed Knaf leaf plaster, etc. in built-in and facing form. The use of shiny aluminum alloy (anodized) distinguishes this product and causes more light. Venus model lights have the capability of FPL lamps in the power of 36*2-36*3-36*4 and FPL LED lamps in the power of 15*2-15*3-15*4.

Technical Specification:

- Environmental compatibility in FPL LED lamps
- Electrostatic powder coating
- Using anodized louvers
- Capability of FPL LED-FPL lamps
- Product body strength with iron sheet
- Ceramic terminal
- Using a separate earth wire

Lamp Type	Screw Type	L (cm)	H (cm)	W (cm)	Weight (Kg)
2*36	2G11	60	6	60	3
3*36	2G11	60	6	60	3.5
4*36	2G11	60	6	60	4
2*15	2G11	60	6	60	2.5
3*15	2G11	60	6	60	3
4*15	2G11	60	6	60	3.5
2*36	2G11	50	6	50	2.5
3*36	2G11	50	6	50	3
4*36	2G11	50	6	50	3.5
2*15	2G11	50	6	50	2
3*15	2G11	50	6	50	2.5
4*36	2G11	50	6	50	3



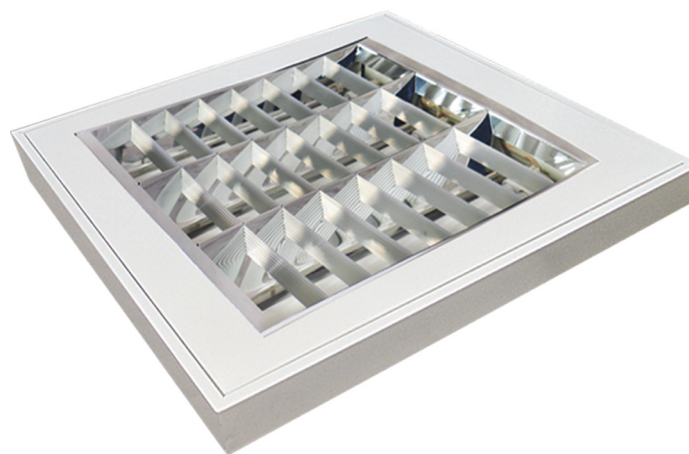
Light: Model: CLASSIC FPL LED-FPL (60*60)

It is designed for use in commercial centers, exhibitions, hospitals, offices, etc., and it can be easily installed in all types of false ceilings, 60 x 60 tiles, fixed Knaf leaf plaster, etc. in built-in and facing form. The use of shiny aluminum alloy (anodized) distinguishes this product and causes more light. Classic model lights have the capability of FPL lamps in powers of 36*2-36*3-36*4 and FPL LED lamps in powers of 15*2-15*3-15*4.

Technical Specification:

- The ability to be dual-purpose for built-in and facing ceilings
- Environmental compatibility in FPL LED lamps
- Electrostatic powder coating
- Using anodized louvers
- Capability of FPL LED-FPL lamps
- Product body strength with iron sheet
- Ceramic terminal
- Using a separate earth wire

Lamp Type	Screw Type	L (cm)	H (cm)	W (cm)	Weight (Kg)
2*36	2G11	60	6	60	3
3*36	2G11	60	6	60	3.5
4*36	2G11	60	6	60	4
2*15	2G11	60	6	60	2.5
3*15	2G11	60	6	60	3
4*15	2G11	60	6	60	3.5



Light: Model: FOROZAN LED (60X60)

It is designed to be used in commercial centers, exhibitions, hospitals, offices, etc., and it can be easily installed in all types of 60x60 false ceilings in the form of built-in tiles. The unique feature of this product is its low depth.

Technical Specification:

- Compatibility with the environment
- Electrostatic powder coating
- Polystyrene diffuser
- Color temperature: 3000-6500
- Flicker Free
- Backlight module
- Color rendering index: more than 80%
- Power factor: above 90%
- IP 40
- Ceramic terminal
- THD less than 10

Power (W)	Luminous Flux (LM)	Lumens per Watt (L/M)	Color Temperature (K)	Dimensions (L*H*W)	Weight (Kg)
50	5000	100	3000-6500	60*4*60	2
75	7500	100	3000-6500	60*4*60	2



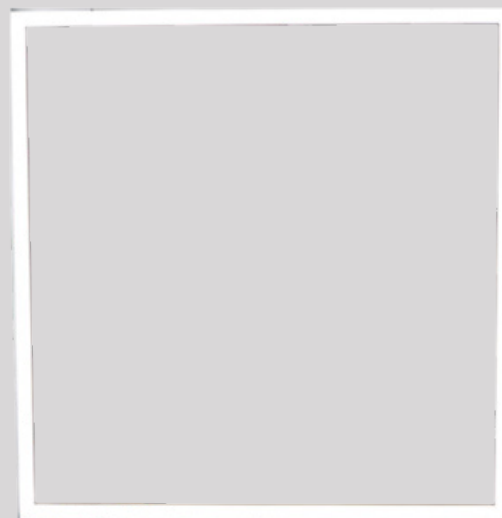
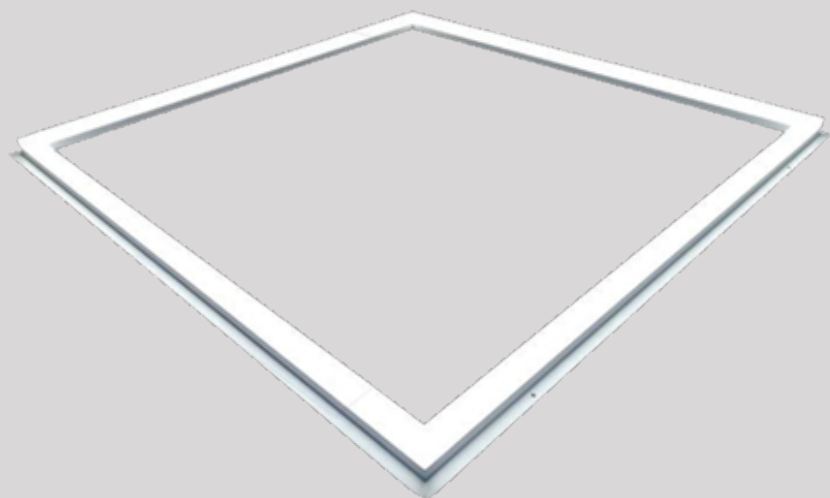
Light: Model: BERELIYAN LED Built in (60*60)

It is designed for use in commercial centers, exhibitions, hospitals, offices, etc., and it can be easily installed in all kinds of false ceilings 60x60 tiles in a built-in way. The unique feature of this product is its low depth and beautiful appearance.

Technical Specification:

- Compatibility with the environment
- Electrostatic powder coating
- Polystyrene diffuser
- Color temperature: 3000-6500
- Flicker Free
- Backlight module
- Color rendering index: more than 80%
- Power factor: above 90%
- IP 40
- THD less than 10

Power (W)	Luminous Flux (LM)	Lumens per Watt (L/M)	Color Temperature (K)	Dimensions (L*H*W)	Weight (Kg)
50	5000	100	3000-6500	60*2*60	1



Light: Model: LAYNER LED

LAYNER lights of the Liner model are produced in built-in, facing and hanging modes in different powers and dimensions according to the customer's order. This product can be used in offices, banks, stores and hotels due to its beautiful and unique appearance and uniform light distribution.

Technical Specification:

- Compatibility with the environment
- Electrostatic powder coating
- Polystyrene diffuser
- Color temperature: 3000-6500
- Backlight module
- Color rendering index: more than 80%
- Power factor: above 90%
- IP 43
- Ceramic terminal
- THD less than 10
- Using a separate earth wire





Light: Model: AGHIGH LED Built-in and Facing

Ceiling Aghigh model lights have a lot of variety. Nowadays, due to the abandonment of old lights, they have been welcomed by many people. In addition to their beauty, these lights are inspired by the latest technology and consume less energy, and at the same time, they provide uniform and high-quality light, in sunny/moonlight/natural colors. In addition, it is produced in different cavities and is suitable for commercial and residential office buildings.

Technical Specification:

- Production based on customer's specific order for different holes
- Compatibility with the environment
- Polystyrene diffuser
- Color temperature: 3000-6500
- Flicker Free
- Backlight module
- Color rendering index: more than 80%
- IP 43
- Ceramic terminal
- ABS body with aluminum heatsink

Power (W)	Luminous Flux (LM)	Lumens per Watt (L/M)	Color Temperature (K)	Cutting Diameter (cm)	Weight (g)
9	900	100	3000-6500	8	0.2
12	1200	100	3000-6500	12	0.3
18	1800	100	3000-6500	16	0.4
12	1200	100	3000-6500	-	0.5
18	1800	100	3000-6500	-	0.7



Light: Model: YAGHOT LED COB Built-in

YAGHOT model lights are made using COB lamp technology, COB lamp stands for "Chips on Board" which means SMD electronic chips stuck on electronic boards that are placed together as a unit. In this new technology, a number of LEDs are compactly mounted on a module, and when they are lit, they are seen as an extremely bright core, which has the advantage of lighting at a height between 4 and 8 meters. and can be used in offices, hotels, gas stations, amphitheater halls and high-altitude places.

Technical Specification:

Technical Specification:

- Productivity and energy efficiency at high altitude
- Optimal energy consumption
- Lifespan (hours): 30,000 hours
- IP54 to IP65
- It has quality and durable electronic parts
- Heat transfer aluminum heat sink

Power (W)	Luminous Flux (LM)	Lumens per Watt (L/M)	Color Temperature (K)	Cutting Diameter (cm)	Weight (g)
30	3600	120	3000-6500	20	0.5





Light: Model: MAHTAB TUBE LED Built-in & Facing

It is designed to be used in commercial centers, exhibitions, banks, offices, etc., and it can be easily installed in all kinds of false ceilings, plaster of Kanaf, in the form of built-in, and in ordinary ceilings in the form of surface. The use of metal laurel has strengthened this product. Mehtab model lights have the capability of TUBE LED lamps in the power of 2*18 and fluorescent lamps in the power of 2*40-36*2.

Technical Specification:

- Production based on customer's specific order for fixed knaf leaf plaster
- Compatibility with the environment in TUBE LED lamps
- Electrostatic powder coating
- Use of metallic laurel
- Product body strength with iron sheet
- Ceramic terminal
- Using a separate earth wire

Lamp Type	Screw Type	L (cm)	H (cm)	W (cm)	Weight (Kg)
2*18	T8	120	6	20	4
2*18	T8	120	6	20	4



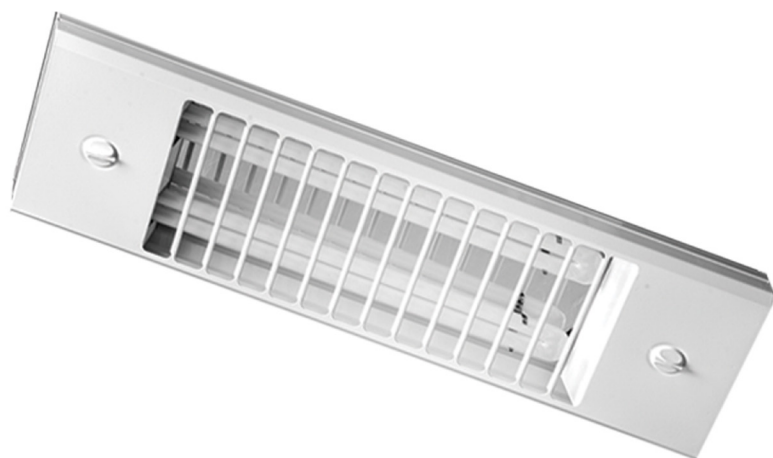
Light: Model: LUX FPL LED-FPL Facing

Lux model lights are mostly used in offices, stores and schools. The good feature of the lux lamp is that it is very elegant and low in height. Thin iron bars have increased the strength of this product. Luxury model lamps have the capability of FPL lamps in 36*2-36*3 powers and FPLLED lamps in 15*2-15*3 powers.

Technical Specification:

- Environmental compatibility in FPL LED lamps
- Electrostatic powder coating
- Use of metallic laurel
- Capability of FPL LED-FPL lamps
- Product body strength with iron sheet
- Ceramic terminal
- Using a separate earth wire

Lamp Type	Screw Type	L (cm)	H (cm)	W (cm)	Weight (Kg)
2*36	2G11	20	6	60	2
3*36	2G11	20	6	60	2.5
2*15	2G11	20	6	60	1.5
3*15	2G11	20	6	60	2



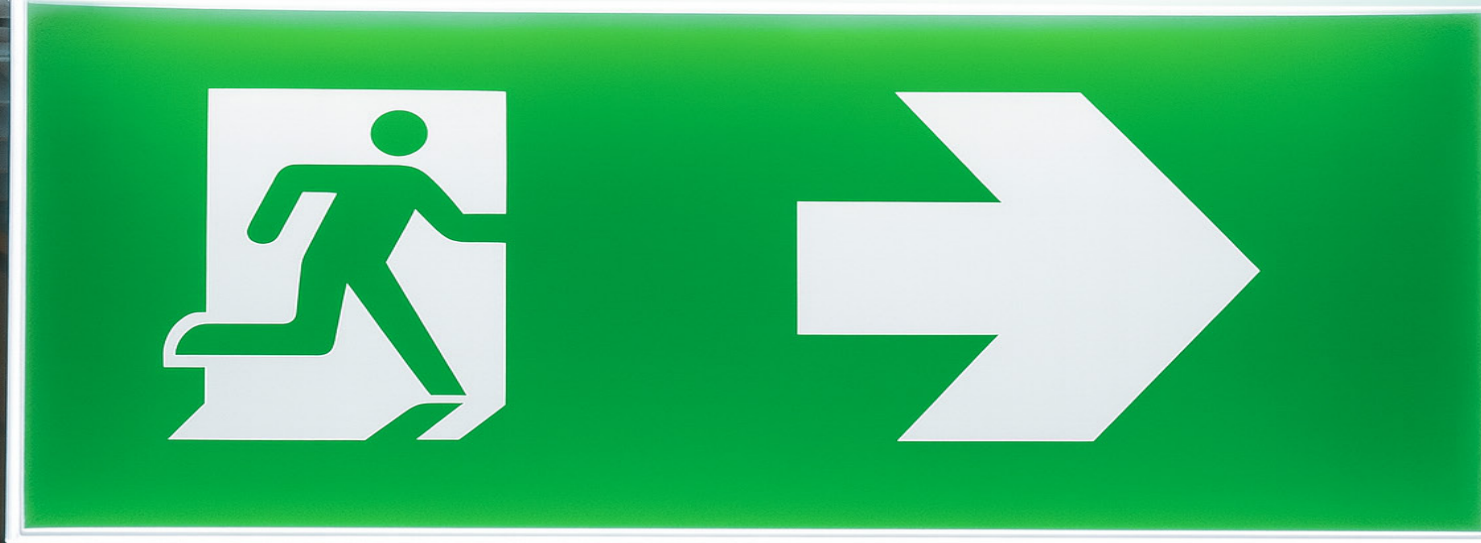
Light: Model: EMERGENCY-EXIT

LED emergency lights in the form of hanging, wall for providing emergency lighting of office/industrial environments, provide the possibility of showing exit routes in emergency situations. Providing emergency lighting in places such as hospitals and administrative projects that show the way out during a power outage is one of the main criteria in choosing the type of light.

Technical Specification:

- Dimensions (cm): 15Watt emergency light: 14*7
- Dimensions (cm): 30Watt emergency light: 44*7
- High productivity and efficiency
- Energy saving
- Possibility of wall and ceiling installation
- Use of high-quality electronic components
- Production and supply in different designs according to the customer's order
- This product can be active with BACKUP of two and three hours





Light: Model: BRACKET LED

Bracket model lights are most commonly used in homes as wall lights and in stores as a longitudinal ceiling light. The easy installation of the bracket model lamp and the beauty of the appearance of this product and the uniform light are the features of this product. The bracket model is produced in such a way that its weight is light and the height of this product is very low so that the shadow is not created on the wall and under the product.

Technical Specification:

- Electrostatic powder coating
- Product body strength with aluminum profile
- Ceramic terminal
- Using a separate earth wire
- Polystyrene diffuser
- Backlight production

Power (W)	Luminous Flux (LM)	Lumens per Watt (L/M)	Color Temperature (K)	Dimensions (L*H*W)	Weight (g)
10	1000	100	3000-6500	30*3*8	0.4
25	2500	100	3000-6500	60*3*8	0.6
55	5500	100	3000-6500	112*3*8	0.8



Light: Model: ALMAS

ALMAS model decorative lights are especially important in interior decoration and lighting of homes, workplaces, bedrooms, kitchens, etc. Decorative lights can be defined as “architectural jewels”. In many buildings, decorative lighting plays an important role in creating design styles. The main goal in lighting design with decorative lights is eye appeal and beauty of the space. These lights consume little electricity due to the use of LED technology, so these decorative lights can be used safely in different environments.

Technical Specification:

- Body material: Metal
- Ability to install lamps: 8-12 watts
- Color type: Static powder
- Easy and convenient installation

Lamp Capability	Screw Type	Product type	Color Type	Body Material	Weight (Kg)
8-12	E27	White Semi-circle Wall	Static Powder	Metal	0.3
8-12	E27	Black Semi-circle Wall	Static Powder	Metal	0.3
8-12	E27	Gold Semi-circle Wall	Static Powder	Metal	0.3
8-12	E27	White Wall Cube	Static Powder	Metal	0.3
8-12	E27	Black Wall Cube	Static Powder	Metal	0.3
8-12	E27	Gold Wall Cube	Static Powder	Metal	0.3





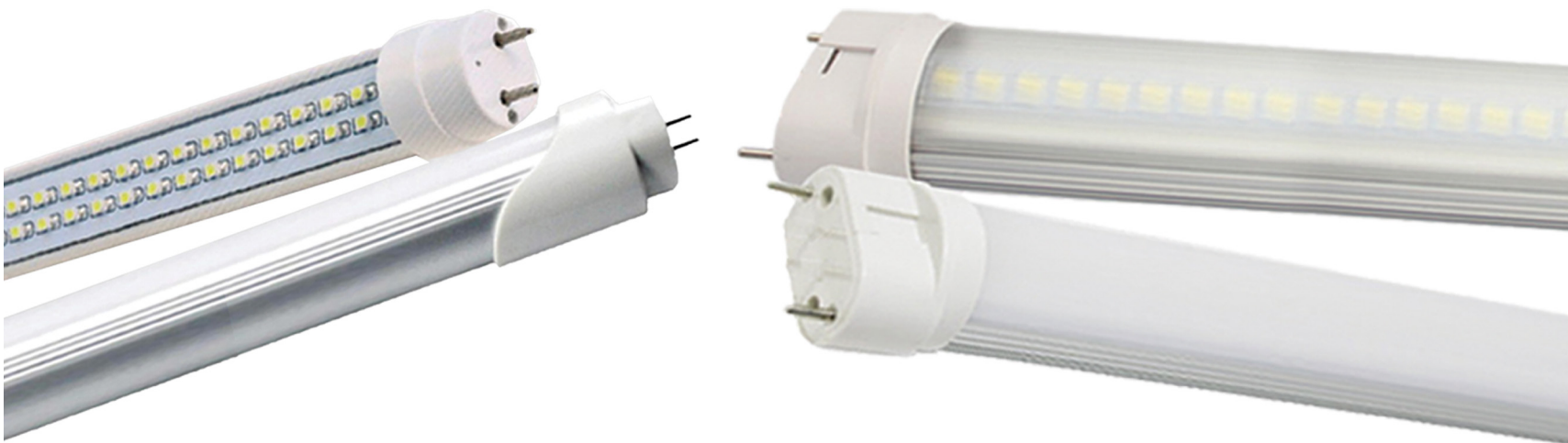
Light: Model: FPL LED - TUBE LED

These types of lights are more efficient than their fluorescent counterparts. Another important point is the use of polycarbonate material (a type of special plastic) instead of glass in the production of this product's tube, which prevents this product from breaking due to impact or falling from a height. The use of an aluminum heatsink causes proper heat transfer from the lamp module to the outside space, which will increase the product's lifespan. Another feature of this product is that it does not need a transformer or starter to turn on, and in other words, it works with 220-volt direct current. TUBE LED lamps and tubes are produced in lengths of 60 cm, 120 cm and 42 cm.

Technical Specification:

- Absence of IR and UV waves
- High productivity and efficiency
- Energy saving
- Suitable replacement for old lamps
- The ability to produce in different powers
- Safe and unbreakable
- Environmentally friendly

Power (W)	Screw Type	Luminous Flux (LM)	Lumens per Watt (L/M)	Color Temperature (K)
9	T8	900	100	3000-6500
15	2G11	1500	100	3000-6500
18	T8	1800	100	3000-6500



Light: Model: MAHTAB TUBE LED Built-in and Facing (120*20)

It is designed to be used in commercial centers, exhibitions, hospitals, offices, etc., and it can be easily installed in all kinds of false ceilings, plaster of Kanaf, in the form of built-in, and in ordinary ceilings in the form of surface. The use of talc polystyrene has made this product shine. Prismatic Mahtab lamps have the capability of TUBE LED lamps in the power of 2*18 and fluorescent lamps in the power of 2-36*2-40*2.

Technical Specification:

- Production based on customer's specific order for fixed knaf leaf plaster
- Compatibility with the environment in TUBE LED lamps
- Electrostatic powder coating
- The use of polystyrene
- Product body strength with iron sheet
- Ceramic terminal
- Using a separate earth wire

Lamp Type	Screw Type	L (cm)	H (cm)	W (cm)	Weight (Kg)
2*18	T8	120	6	20	4
3*18	T8	120	6	20	4



Light: Model: Negatoscope LED Built-in and Facing

A negatoscope is a bright screen on which radiology films are placed, and by means of which it is easy to see the details of the films. The light of the screen of the negatoscope must be evenly spread over the entire screen, because the unevenness of the light and creating a shadow on the screen will cause errors in the doctor's diagnosis. This equipment is available in wall-mounted and built-in types, as well as on the base, which are produced in single, double, triple and quadruple types depending on the number of photos displayed on the page.

Technical Specification:

- Environmentally friendly
- Electrostatic powder coating
- Polystyrene diffuser
- Color temperature: 3000-6500
- FLICKER FREE
- Backlight module
- Color rendering index: More than 80%
- Power Factor: Above 90%
- IP 40
- Ceramic terminal
- THD less than 10

Power (W)	Luminous Flux (LM)	Lumens per Watt (L/M)	Color Temperature (K)	Dimensions (L*H*W)	Weight (g)
30	3000	100	3000-6500	50*6*50	3
40	4000	100	3000-6500	80*6*60	4
50	5000	100	3000-6500	106*6*60	5
60	6000	100	3000-6500	161*6*60	6
30	3000	100	3000-6500	55*6*55	3
40	4000	100	3000-6500	80*6*55	4
50	5000	100	3000-6500	115*6*55	5
60	6000	100	3000-6500	162*6*55	6



Light: Model: PARASTARI Night Vision Built-in

The night vision lights of the Parastari model are installed in the body wall of the inpatient room in a built-in manner so that when the nurse enters the patient's room, they do not disturb the patient's rest at any moment of the night which is about 5 LUX to see the passage.

Technical Specification:

- Downlight for less glare
- IP43
- LED module
- Color temperature: 3000-6500
- Dimensions and sizes according to customer orders

Type of Protection	Power (W)	Luminous Flux (LM)	Lumens per Watt (L/M)	Color Temperature (K)	Weight (g)
Colored metal	12	1200	100	3000-6500	1.5
Steel	12	1200	100	3000-6500	1.5



Light: Model: JAHAN LED Street Light

Jahan model lights are the new generation of street lights that are produced using the best standard electronic parts and different lenses. The characteristics of these lights are high efficiency, very long life, low energy consumption and symmetrical light distribution. The body is die-cast aluminum with electrostatic powder paint. Jahan model street lights with a very beautiful and durable design are suitable for use in alleys, major streets, highways, etc. This street light model is produced as a direct power module without a driver.

Technical Specification:

- High energy savings compared to HID lights
- Symmetrical light distribution with high uniformity
- High coefficient of optical flux retention due to the heat rejection system and the type of lens used
- Use of direct power module and high-power factor
- High sealing and good corrosion resistance
- Power Factor: Above 90%
- Lifespan (hours): More than 50,000 hours
- Color rendering index: More than 80%



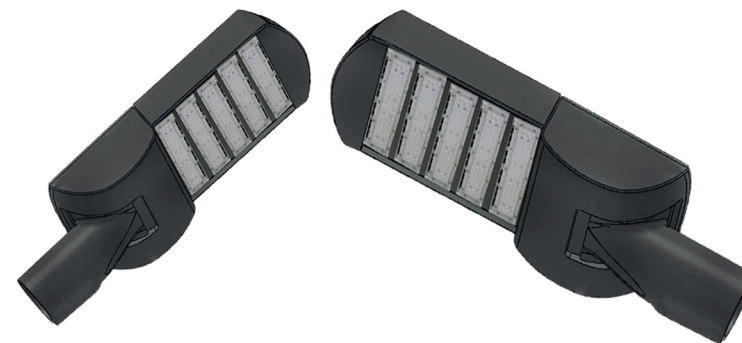
Power (W)	Luminous Flux (LM)	Lumens per Watt (L/M)	Color Temperature (K)	Lens Type	Weight (Kg)
35	4200	120	3000-6500	30-60-90-120	2
50	6000	120	3000-6500	30-60-90-120	2.5
60	7200	120	3000-6500	30-60-90-120	2.5
80	9600	120	3000-6500	30-60-90-120	3
100	12000	120	3000-6500	30-60-90-120	3.5
120	14400	120	3000-6500	30-60-90-120	4
135	16200	120	3000-6500	30-60-90-120	4
150	18000	120	3000-6500	30-60-90-120	5
170	20400	120	3000-6500	30-60-90-120	5.5
200	24000	120	3000-6500	30-60-90-120	6

Light: Model: URANUS LED Street Light

Uranus model lights are a new generation of street lights that are produced using the best standard electronic parts and different lenses. The characteristics of these lights are high efficiency, very long life, low energy consumption and symmetrical light distribution. The body is die-cast aluminum with electrostatic powder paint. Uranus model street lights with a very beautiful and durable design are suitable for use in alleys, major streets, highways, etc. This street light model is produced as a direct power module without a driver.

Technical Specification:

- High energy savings compared to HID lights
- High coefficient of optical flux retention due to the heat rejection system and the type of lens used
- Using an efficient LED Driver with the lowest THD pollution and high-power factor
- High sealing and good corrosion resistance
- Power Factor: Above 90%
- Lifespan (hours): More than 50,000 hours
- Color rendering index: More than 80%
- Body Material: Aluminum



Power (W)	Luminous Flux (LM)	Lumens per Watt (L/M)	Color Temperature (K)	Lens Type	Weight (Kg)
35	4200	120	3000-6500	30-60-90-120	2
60	7200	120	3000-6500	30-60-90-120	2.5
80	9600	120	3000-6500	30-60-90-120	3
100	12000	120	3000-6500	30-60-90-120	3.5
120	14400	120	3000-6500	30-60-90-120	4
150	18000	120	3000-6500	30-60-90-120	5
170	20400	120	3000-6500	30-60-90-120	5.5
200	24000	120	3000-6500	30-60-90-120	6

Light: Model: ZOMORROD LED Street Light

Zomorrod model lights are new generation street lights that are produced using the best standard electronic parts and different lenses. The characteristics of these lights are high efficiency, very long life, low energy consumption and symmetrical light distribution. The body is die-cast aluminum with electrostatic powder paint. Emerald model street lights with a very beautiful and durable design are suitable for use in local roads, roads, highways, etc.

Technical Specification:

- High energy savings compared to HID lights
- High coefficient of optical flux retention due to the heat rejection system and the type of lens used
- Using an efficient LED Driver with the lowest THD pollution and high-power factor
- High sealing and good corrosion resistance
- Power Factor: Above 90%
- Lifespan (hours): More than 50,000 hours
- Color rendering index: More than 80%
- Body Material: Aluminum

Power (W)	Luminous Flux (LM)	Lumens per Watt (L/M)	Color Temperature (K)	Weight (Kg)
50	6000	120	3000-6500	3.5
100	12000	120	3000-6500	4.8
150	18000	120	3000-6500	6.2



Light: Model: ATLAS LED Projector

Atlas model projectors are used in the lighting of industrial environments, factories, warehouses, sports halls and especially light towers. The distinctive feature of this product is the existence of different lenses that provide illumination for high heights and different lengths, and the body material is extruded aluminum, and due to the use of LED technology, with a lifespan of 50,000 hours, it can significantly save on maintenance and repair costs. The Atlas model projector is being produced in powers of 50 watts to 900 watts.

Technical Specification:

- Absence of IR and UV waves and optimization of electricity consumption
- Installation speed and ease of setup
- Reduced maintenance costs due to long life (50,000 hours)
- High efficiency compared to other lights on the market
- Suitable for sheds and industrial halls and light towers with high height and sports stadiums
- The desired product is produced with moonlight, sunny and natural colors from 2700 to 6500 Kelvin.
- The possibility of increasing or decreasing the luminous flux by 8%

Power (W)	Luminous Flux (LM)	Lumens per Watt (L/M)	Color Temperature (K)	Lens Type	Weight (Kg)
50	6000	120	3000-6500	30-60-90-120	2
100	12000	120	3000-6500	30-60-90-120	4
150	18000	120	3000-6500	30-60-90-120	5
200	24000	120	3000-6500	30-60-90-120	6
250	30000	120	3000-6500	30-60-90-120	7
300	36000	120	3000-6500	30-60-90-120	8
400	48000	120	3000-6500	30-60-90-120	12
500	60000	120	3000-6500	30-60-90-120	15
600	72000	120	3000-6500	30-60-90-120	17
900	108000	120	3000-6500	30-60-90-120	25



Light: Model: SANDIKA LED-COB Shed

These lights are used in the lighting of industrial environments and factories, warehouses and sports halls, the material of the body and its reflector is metal and has a suitable radiation angle, and due to the use of LED technology, it can save energy with a lifespan of 50,000 hours.

Technical Specification:

- Absence of IR and UV waves and optimization of electricity consumption
- Installation speed and ease of setup
- Reduced maintenance costs due to long life (50,000 hours)
- High efficiency compared to other lights on the market
- Suitable for sheds and industrial halls and light towers with high height
- Uniform distribution of light
- The desired product is produced with moonlight, sunny and natural colors from 2700 to 6500 Kelvin.
- The possibility of increasing or decreasing the luminous flux by 8%

Power (W)	Luminous Flux (LM)	Lumens per Watt (L/M)	Color Temperature (K)	Weight (Kg)
50	6000	120	3000-6500	3.5
100	12000	120	3000-6500	4.8
150	18000	120	3000-6500	6.2



Light: Model: SAFINEH LED Shed

This product model is designed and built with targeted light distribution, strong and durable die-cast aluminum body structure and IP65 degree of protection. It is suitable for use in gyms, swimming pools, industrial environments and factories. This product provides you with the ability to be used as a pendant and fixed installation with a handle.

Technical Specification:

- Direct current LED module
- Power Factor: Above 90%
- Body Material: Aluminum
- IP65
- Tempered glass
- Using the highest quality electronic components

Power (W)	Luminous Flux (LM)	Lumens per Watt (L/M)	Color Temperature (K)	Diameter (cm)	Weight (Kg)
150	18000	120	3000-6500	49	3.5
200	24000	120	3000-6500	49	4.8



Light: Model: KHORSHIDI LED Industrial

This projector model is designed and built with targeted light distribution, strong and durable die-cast aluminum body structure and IP65 protection level. It is suitable for use in sports halls, swimming pools and industrial environments and factories. This product provides you with the ability to be used as a pendant and to install the stable along with the handle.

Technical Specification:

- Direct current LED module
- Power Factor: Above 90%
- Body Material: Aluminum
- IP65
- Tempered glass
- Using the highest quality electronic components

Power (W)	Luminous Flux (LM)	Lumens per Watt (L/M)	Color Temperature (K)	Diameter (cm)	Weight (Kg)
100	12000	120	3000-6500	34	3
200	24000	120	3000-6500	40	4



Light: Model: BITA Tunnel

Bitra model tunnel lights are produced with elegant design and high strength. The strong die-cast aluminum body and high degree of protection (IP65) is one of the outstanding features of this lamp. The glass of this product is 3-mil strong, and a metal guard is used on the glass, which protects the glass and prevents it from hitting the glass. The E27 screw head is used in the tunnel light, which has the ability to close the 100 watt filament lamp and the LED lamp. In addition, this product can be used on the wall and ceiling.

Technical Specification:

- Diecast aluminum body
- 3 mil strong tempered glass
- IP65 high degree of protection
- Type of protection: Metal

Type of Protection	Screw Type	Lamp type	Installation	Weight (Kg)
Metal	E27	100-watt string 8-watt LED	Facing	0.5
ABS	LED module	12-watt LED	Facing	0.5



Light: Model: Reflective and Semi-reflective lights HELALI & HALF HELALI Facing

Helali & Half Helali model reflector lights with beautiful design are produced in different models for use in industrial space and roofed places. Ease of access to electrical equipment, durability and high efficiency are prominent features of this type of lights. The body of this product is made of metal and is very resistant. The reflector light is designed to be used on top of industrial devices.

Technical Specification:

-Helali & Half Helali model reflector lights with beautiful design are produced in different models for use in industrial space and roofed places. Ease of access to electrical equipment, durability and high efficiency are prominent features of this type of lights. The body of this product is made of metal and is very resistant. The reflector light is designed to be used on top of industrial devices.

Lamp Type	Screw Type	Length (cm)	Weight (Kg)
1*18	T8	120	2
2*18	T8	120	3



Light: Model: SIGMA LED Facing Waterproof

Waterproof lights are among the lights that can be used in dusty and humid environments and have high durability against the phenomenon of corrosion. This type of lamp is designed in different sizes and different power consumptions. Due to the characteristics of this lamp, it can be used in motor houses and heating houses, oil, gas and petrochemical industries, coastal areas, swimming pools, etc. 18*1 and 18*2 TUBELED lamps can be used in this Sigma model waterproof lamp.

Technical Specification:

- Polycarbonate diffuser with very strong ABS body
- Sealing degree IP65
- Allowed operating temperature range: +70 to -20
- Symmetrical light distribution
- Wide angle of radiation
- High resistance to any environmental factors
- Screw type: T8
- Capability of TUBE LED lamps

Lamp Type	Screw Type	Length (cm)	Weight (Kg)
2*18	T8	120	2.5
1*18	T8	120	2



Light: Model: SMART Facing Wall

Smart model yard lights are used in outdoor spaces and open environments, and due to having IP65, it is highly resistant to dust and rain.

Technical Specification:

- Body material: Aluminum and Metal
- Electrostatic powder paint
- Ability to install on the wall
- Suitable light distribution
- Talc material: Polycarbonate
- Production and supply in different colors
- IP65
- Colour: White - Black

Lamp Capability	Screw Type	Installation Type	Body material	Color type	Weight (Kg)
12-20	E27	Mural	Aluminum and Metal	Static Powder	2



Light Tower

Lighting towers are produced and supplied in different sizes, which can be produced at a height of 8 to 30 meters. The external surface of these towers is galvanized and colored. These towers illuminate a large area. For this reason, they have the same efficiency as several street lamp bases. It is suitable for lighting large areas such as: parks, squares, bridges, buildings, such as hospitals and factories.

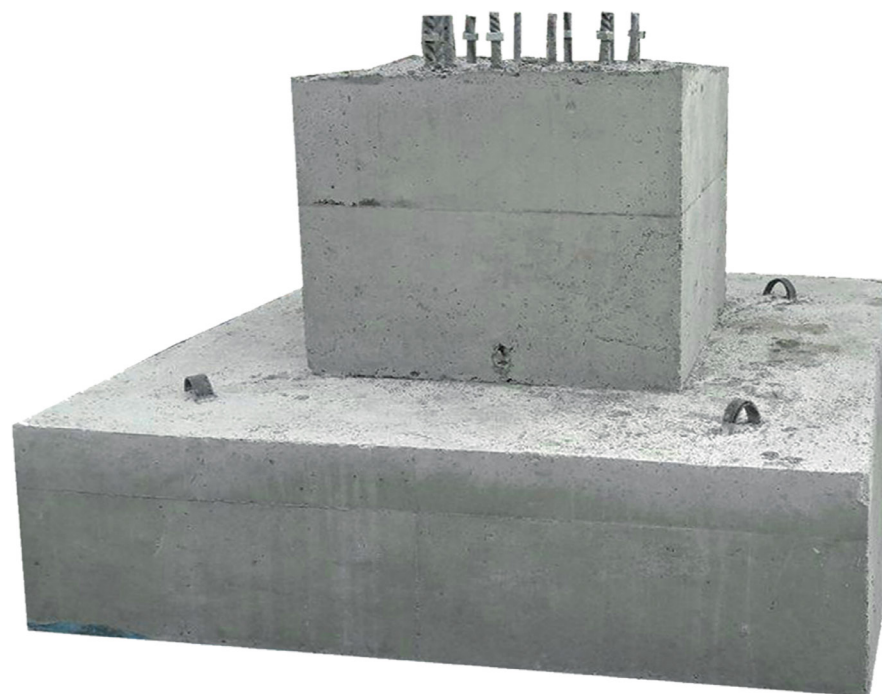
Technical Specification:

- The ability to install mobile and fixed baskets
- Easy to use
- Complete safety against electric shock
- The ability to install all kinds of projectors in different powers
- Polyhedral body with hot or colored galvanized coating
- The possibility of using LED projectors and reducing electricity consumption
- Proper and uniform light distribution
- Foundation design according to the height and weight of the base



Types of Foundation

- Precast Concrete Foundation
- Coiled Bolt



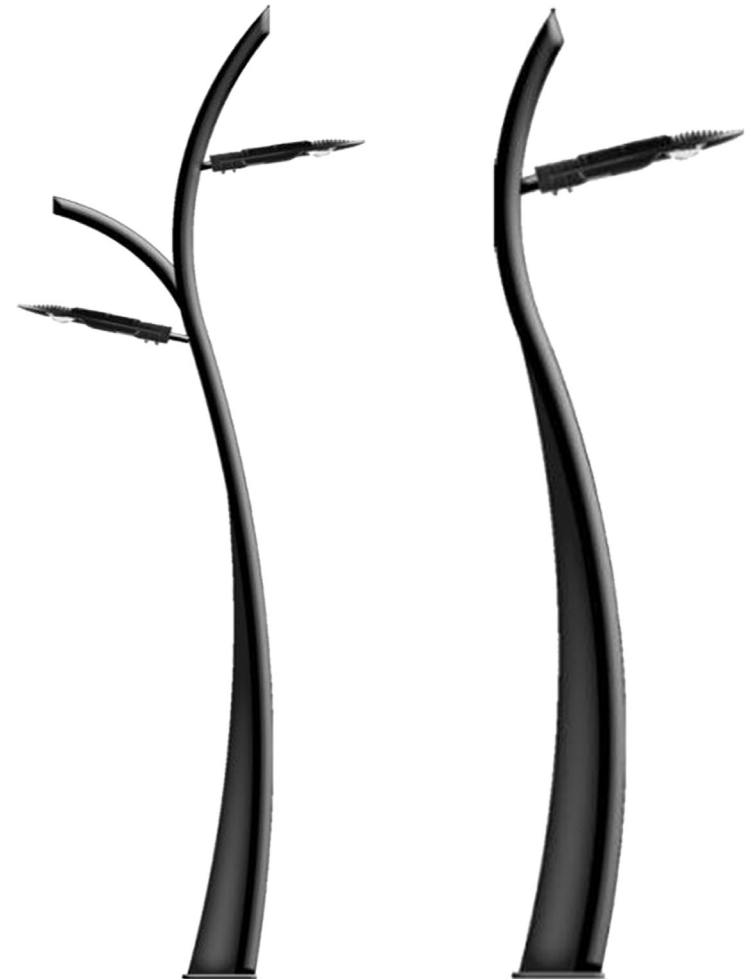
Tree model park base (one-way and two-way)

Tree-type Park bases are produced in various types of tubes and in fantasy, according to the order or demand of the consumer and according to the design of urban roads and parks, and can be supplied in different designs for the lighting of roads in the standard range. The base cover of the tree model park light is determined according to the climate of the region and the level of durability.

Technical Specification:

- The ability to build from 3 to 6 meters in a tubular form
- Thickness proportional to height
- The ability to install 2 lights in different types and powers
- The possibility of using a ready-made foundation for quick installation
- Unique beauty
- Having an iron pipe in the body structure
- Design and manufacture according to the customer's order in terms of color and height
- Body Material: Metal

Height (cm)	Color Type	Body Material	The length of the handle (cm)	Thickness (mm)	Diameter (inch)
400	Static powder	Metal	30	3	3



Felora Model; Parking Light Head
Azarakhsh Model; Parking Light Head
Zohal Model; Parking Light Head

Park lights with a beautiful design and suitable for lighting areas, two-way secondary and local streets, parks and gardens. According to the place of use of these lights, which is usually parks and gardens, the lamp glass is made of high-quality polycarbonate, which has full impact resistance and is also resistant to ultraviolet rays. According to the type of application of this lamp, the reflectors are designed in such a way that it is possible to use this lamp to create light with proper uniformity around the place of installation. For use in parks and places where, in addition to lighting, beauty is also of particular importance.

Technical Specification:

- Durable and flexible polycarbonate glass resistant to UV rays
- Unique beauty
- Having an iron pipe in the body structure
- Resistance of parking lights against the penetration of moisture and dust
- Having a very high lifespan and fully guaranteed
- Design and manufacture according to the customer's order in terms of color

Model	Height (cm)	Color Type	Body Material	Type of protection	Thickness (mm)	Diameter (inch)
Felora Model; Parking Light Head	40	Static powder	Metal	Polycarbonate	-	-
Azarakhsh Model; Parking Light Head	53	Static powder	Metal	tempered glass	-	-
Zohal Model; Parking Light Head	250-400	Static powder	Metal	-	2-3	2-3



Model: Damavand Grass Base

Damavand model grass base, which has an eye-catching appearance and a completely architectural light design in the light industry, with the unique important feature of this grass base, is its mesh body, which is the most used in green spaces and parks. This product is the best option for lighting parks and green spaces by providing light in accordance with lighting standards.

Technical Specification:

- Strong structure
- Durability of lamp cover in harsh environmental conditions
- High degree of protection
- Perfectly symmetrical light distribution
- The ability to produce lights in different sizes
- High optical efficiency and lifetime
- Design and manufacture to customer order

Height (cm)	Color Type	Body Material	Type of Talc
80	Static powder	Metal mesh	Polycarbonate



Model: Sabalan Grass Base

Lawn lights with an eye-catching design and a completely architectural light design. The important feature of this grass foundation is its mesh body, which is the most used in green spaces and parks. This product is the best option for lighting parks and green spaces by providing light in accordance with the lighting standards of green spaces. Also, this type of lights is designed and manufactured with the most advanced techniques. This type of light is available for use in open spaces, green spaces, and gardens.

Technical Specification:

- Strong structure
- Durability of lamp cover in harsh environmental conditions
- High degree of protection
- Perfectly symmetrical light distribution
- The ability to produce lights in different sizes
- High optical efficiency and lifetime
- Design and manufacture to customer order

Height (cm)	Color Type	Body Material	Type of Talc	Pot Material
80	Static powder	Metal mesh	Polycarbonate	Aluminum





A-Bulb-Bubble Lamp

Specifications	7 watts	9 watts	12 watts	15 watts	18 watts	20 watts	25 watts
Frequency	50Hz ~ 60Hz						
Ingress Protection (IP)	IP20						
Maintain Optical Flux	70% <						
Displacement Coefficient	0.9						
Energy Efficiency Group	A+						
Flicker	FREE						
CRI	%80<						
Voltage (V)	175~265V						
Photometric Code	865/7*7*7 & 830/7*7*7						
Permissible Range of Ambient Temperature	-10 ~ 40 Degrees Celsius						
SDCM	7 >						
LED type / Technology	2835 / SMD						
Lifespan (hours)	20,000						
Body and Bubble Color	Matte White						
Body Material	Plastic						
Lumens per Watt	95 ~ 105	100 ~ 110	95 ~ 105	95 ~ 105	90 ~ 100	95 ~ 100	95 ~ 105
Optical Flux (lumen)	665 ~ 700	880 ~ 980	1100 ~ 1200	1450 ~ 1550	1750 ~ 1680	1850 ~ 2000	2450 ~ 2650
Screw Type	E27						
Color Temperature (K)	3000-6500						
Current (mA)	58	75	100	124	124	150	150
Bulb Diameter x Bulb Length	110mm ±5% ×60mm ±5%	112mm ±5% ×60mm ±5%	125mm ±5% ×65mm ±5%	136mm ±5% ×70mm ±5%	157mm ±5% ×80mm ±5%	150mm ±5% ×80mm ±5%	150mm ±5% ×80mm ±5%
Bubble Material	Polycarbonate						
Weight	26gr ±5%	25.5gr ±5%	38gr ±5%	42gr ±5%	56gr ±5%	61gr ±5%	61gr ±5%
Power Factor	PF>0.5						
Angle of Radiation	220 degrees						
Usage	Administrative - Commercial - General - Residential						
Warranty Period	2 years						
Light Color	2 years						

T-Bulb-Bubble Lamp

Specifications	20 watts	30 watts	40 watts	50 watts
Frequency	50Hz ~ 60Hz			
Ingress Protection (IP)	IP20			
Maintain Optical Flux	70% <			
Displacement Coefficient	0.9			
Energy Efficiency Group	A+			
Flicker	FREE			
CRI	%80<			
Voltage (V)	175~265V			
Photometric Code	865/7*7*7 & 830/7*7*7			
Permissible Range of Ambient Temperature	-10 ~ 40 Degrees Celsius			
SDCM	7 >			
LED type / Technology	2835 / SMD			
Lifespan (hours)	20,000			
Body and Bubble Color	Matte White			
Body Material	Plastic			
Lumens per Watt	90 ~ 100	95 ~ 105	90 ~ 95	90 ~ 100
Optical Flux (lumen)	1800 ~ 1900	2850 ~ 3000	3400 ~ 3650	4500 ~ 4750
Screw Type	E27			
Color Temperature (K)	3000-6500			
Current (mA)	160	232	100	380
Bulb Diameter x Bulb Length	142mm ±5% ×80mm ±5%	167mm ±5% ×100mm ±5%	190mm ±5% ×122mm ±5%	233mm ±5% ×138mm ±5%
Bubble Material	Polycarbonate			
Weight	63gr ±5%	98gr ±5%	150gr ±5%	210gr ±5%
Power Factor	PF>0.5			
Angle of Radiation	220 degrees			
Usage	Administrative - Commercial - General - Residential			
Warranty Period	2 years			
Light Color	Moonlight-Sunny			





Candle Bubble Lamp

Specifications	6 watts	7 watts
Frequency	50Hz ~ 60Hz	
Ingress Protection (IP)	IP20	
Maintain Optical Flux	70% <	
Displacement Coefficient	0.9	
Energy Efficiency Group	A+	
Flicker	FREE	
CRI	%80<	
Voltage (V)	175~265V	
Photometric Code	865/7*7*7 & 830/7*7*7	
Permissible Range of Ambient Temperature	-10 ~ 40 Degrees Celsius	
SDCM	7 >	
LED type / Technology	2835 / SMD	
Lifespan (hours)	20,000	
Body and Bubble Color	Matte White	
Body Material	Plastic	
Lumens per Watt	90 ~ 100	
Optical Flux (lumen)	540 ~ 570	650 ~ 700
Screw Type	E14	
Color Temperature (K)	3000-4000-6500	
Current (mA)	55	
Bulb Diameter x Bulb Length	110mm ±5% ×38mm ±5%	
Bubble Material	Polycarbonate	
Weight	25gr ±5%	
Power Factor	PF>0.5	
Angle of Radiation	220 degrees	
Usage	Residential - All kinds of Chandeliers and Decorative Lights - Hotel	
Warranty Period	2 years	
Light Color	Moonlight-Sunny	

Candle-Tear Bulb Lamp

Specifications	6 watts	7 watts
Frequency	50Hz ~ 60Hz	
Ingress Protection (IP)	IP20	
Maintain Optical Flux	70% <	
Displacement Coefficient	0.9	
Energy Efficiency Group	A+	
Flicker	FREE	
CRI	%80<	
Voltage (V)	175~265V	
Photometric Code	865/7*7*7 & 830/7*7*7	
Permissible Range of Ambient Temperature	-10 ~ 40 Degrees Celsius	
SDCM	7 >	
LED type / Technology	2835 / SMD	
Lifespan (hours)	20,000	
Body and Bubble Color	Matte White	
Body Material	Plastic	
Lumens per Watt	90 ~ 100	
Optical Flux (lumen)	540 ~ 570	630 ~ 665
Screw Type	E14	
Color Temperature (K)	3000-4000-6500	
Current (mA)	55	
Bulb Diameter x Bulb Length	134mm ±5% ×36mm ±5%	
Bubble Material	Polycarbonate	
Weight	25gr ±5%	
Power Factor	PF>0.5	
Angle of Radiation	220 degrees	
Usage	Residential - All kinds of Chandeliers and Decorative Lights - Hotel	
Warranty Period	2 years	
Light Color	Moonlight-Sunny	





Halogen lamp GU10

Specifications	6 watts	7 watts
Frequency	50Hz ~ 60Hz	
Ingress Protection (IP)	IP20	
Maintain Optical Flux	70% <	
Displacement Coefficient	0.9	
Energy Efficiency Group	A+	
Flicker	FREE	
CRI	%80<	
Voltage (V)	175~265V	
Photometric Code	865/7*7*7 & 830/7*7*7	
Permissible Range of Ambient Temperature	-10 ~ 40 Degrees Celsius	
SDCM	7 >	
LED type / Technology	2835 / SMD	
Lifespan (hours)	20,000	
Body and Bubble Color	Matte White	
Body Material	Plastic	
Lumens per Watt	90 ~ 100	95 ~ 100
Optical Flux (lumen)	530 ~ 560	700 ~ 650
Screw Type	E14	
Color Temperature (K)	3000-4000-6500	
Current (mA)	55	
Bulb Diameter x Bulb Length	58mm ±5% × 50mm ±5%	
Bubble Material	PMMA	
Weight	30gr ±5%	
Power Factor	0.55 <	
Angle of Radiation	60 degrees	
Socket	GU10	
Usage	General- Residential- Decorative Lighting - Local and Focused Lighting	
Warranty Period	2 years	
Light Color	Moonlight-Sunny- Icy	



Technical Specifications of Ketrowa Lighting

Lifespan (hours)	30.000~50.000 hours
Frequency	50Hz~60Hz
Ingress Protection	IP40
Colour Temperature	3000~6500
Power Factor	Above 90%
THD	Less than 10
Compatibility with the Environment	
Electrostatic Powder Coating	
Polystyrene Diffuser	
Ceramic Terminal	
Product is produced with Moonlight, Sunny & Natural Colours from 2700 to 6500 Kelvin	
The Possibility of Increasing or Decreasing the Luminous Flux by 8%	



CERTIFICATE

THE MANAGEMENT SYSTEM OF
TOSEE VA TAMIN BANA GOSTAR ASIA SAZEH CO. (KETROWA)

NO.477, BETWEEN 1ST AND 2ND VAHD ST., SHAHID BEHESHTI BLVD., BAGHESTAN HWY., SHAHRAR, TEHRAN PROVINCE, IRAN

has been assessed and certified as meeting the requirements of
ISO 14001:2015

Environmental management system

FOR THE FOLLOWING ACTIVITIES

Comprehensive Supplier of Building Materials

CERTIFICATE REGISTRATION NO.: QM5933306
ORIGINAL CERTIFICATION DATE: MAY 07, 2025
CURRENT CERTIFICATION DATE: MAY 07, 2025
CERTIFICATE EXPIRY DATE: MAY 07, 2028
THIS CERTIFICATE REMAINS VALID SUBJECT TO SATISFACTORY SURVEILLANCE AUDITS.


Authorized Signatory
EIQM Ltd. Certification Services
info@eiqmcert.com



EIQM Ltd. Certification Services is a certification body for assessment of objective evidence and issuance of certificate. this certificate is issued on the basis of the independent authority of the EIQM certification services. we partner with you to offer independent services that will help you, streamline your processes and operate in a more sustainable manner.
The validity of this certificate can be verified at www.eiqmcert.com



CERTIFICATE

THE MANAGEMENT SYSTEM OF
TOSEE VA TAMIN BANA GOSTAR ASIA SAZEH CO. (KETROWA)

NO.477, BETWEEN 1ST AND 2ND VAHD ST., SHAHID BEHESHTI BLVD., BAGHESTAN HWY., SHAHRAR, TEHRAN PROVINCE, IRAN

has been assessed and certified as meeting the requirements of
ISO 45001:2018

Occupational health and safety management system

FOR THE FOLLOWING ACTIVITIES

Comprehensive Supplier of Building Materials

CERTIFICATE REGISTRATION NO.: QM5933307
ORIGINAL CERTIFICATION DATE: MAY 07, 2025
CURRENT CERTIFICATION DATE: MAY 07, 2025
CERTIFICATE EXPIRY DATE: MAY 07, 2028
THIS CERTIFICATE REMAINS VALID SUBJECT TO SATISFACTORY SURVEILLANCE AUDITS.


Authorized Signatory
EIQM Ltd. Certification Services
info@eiqmcert.com



EIQM Ltd. Certification Services is a certification body for assessment of objective evidence and issuance of certificate. this certificate is issued on the basis of the independent authority of the EIQM certification services. we partner with you to offer independent services that will help you, streamline your processes and operate in a more sustainable manner.
The validity of this certificate can be verified at www.eiqmcert.com



CERTIFICATE

THE MANAGEMENT SYSTEM OF
TOSEE VA TAMIN BANA GOSTAR ASIA SAZEH CO. (KETROWA)

NO.477, BETWEEN 1ST AND 2ND VAHD ST., SHAHID BEHESHTI BLVD., BAGHESTAN HWY., SHAHRAR, TEHRAN PROVINCE, IRAN

has been assessed and certified as meeting the requirements of
ISO 9001:2015

Quality management system

FOR THE FOLLOWING ACTIVITIES

Comprehensive Supplier of Building Materials

CERTIFICATE REGISTRATION NO.: QM5933305
ORIGINAL CERTIFICATION DATE: MAY 07, 2025
CURRENT CERTIFICATION DATE: MAY 07, 2025
CERTIFICATE EXPIRY DATE: MAY 07, 2028
THIS CERTIFICATE REMAINS VALID SUBJECT TO SATISFACTORY SURVEILLANCE AUDITS.


Authorized Signatory
EIQM Ltd. Certification Services
info@eiqmcert.com



EIQM Ltd. Certification Services is a certification body for assessment of objective evidence and issuance of certificate. this certificate is issued on the basis of the independent authority of the EIQM certification services. we partner with you to offer independent services that will help you, streamline your processes and operate in a more sustainable manner.
The validity of this certificate can be verified at www.eiqmcert.com



CERTIFICATE

THE MANAGEMENT SYSTEM OF
TOSEE VA TAMIN BANA GOSTAR ASIA SAZEH CO. (KETROWA)

NO.477, BETWEEN 1ST AND 2ND VAHD ST., SHAHID BEHESHTI BLVD., BAGHESTAN HWY., SHAHRAR, TEHRAN PROVINCE, IRAN

has been assessed and certified as meeting the requirements of
IMS

ISO 9001:2015 , ISO 14001:2015 , ISO 45001:2018

FOR THE FOLLOWING ACTIVITIES

Comprehensive Supplier of Building Materials

CERTIFICATE REGISTRATION NO.: QM5933308
ORIGINAL CERTIFICATION DATE: MAY 07, 2025
CURRENT CERTIFICATION DATE: MAY 07, 2025
CERTIFICATE EXPIRY DATE: MAY 07, 2028
THIS CERTIFICATE REMAINS VALID SUBJECT TO SATISFACTORY SURVEILLANCE AUDITS.


Authorized Signatory
EIQM Ltd. Certification Services
info@eiqmcert.com



EIQM Ltd. Certification Services is a certification body for assessment of objective evidence and issuance of certificate. this certificate is issued on the basis of the independent authority of the EIQM certification services. we partner with you to offer independent services that will help you, streamline your processes and operate in a more sustainable manner.
The validity of this certificate can be verified at www.eiqmcert.com





info@ketrowa.com

www.ketrowa.com